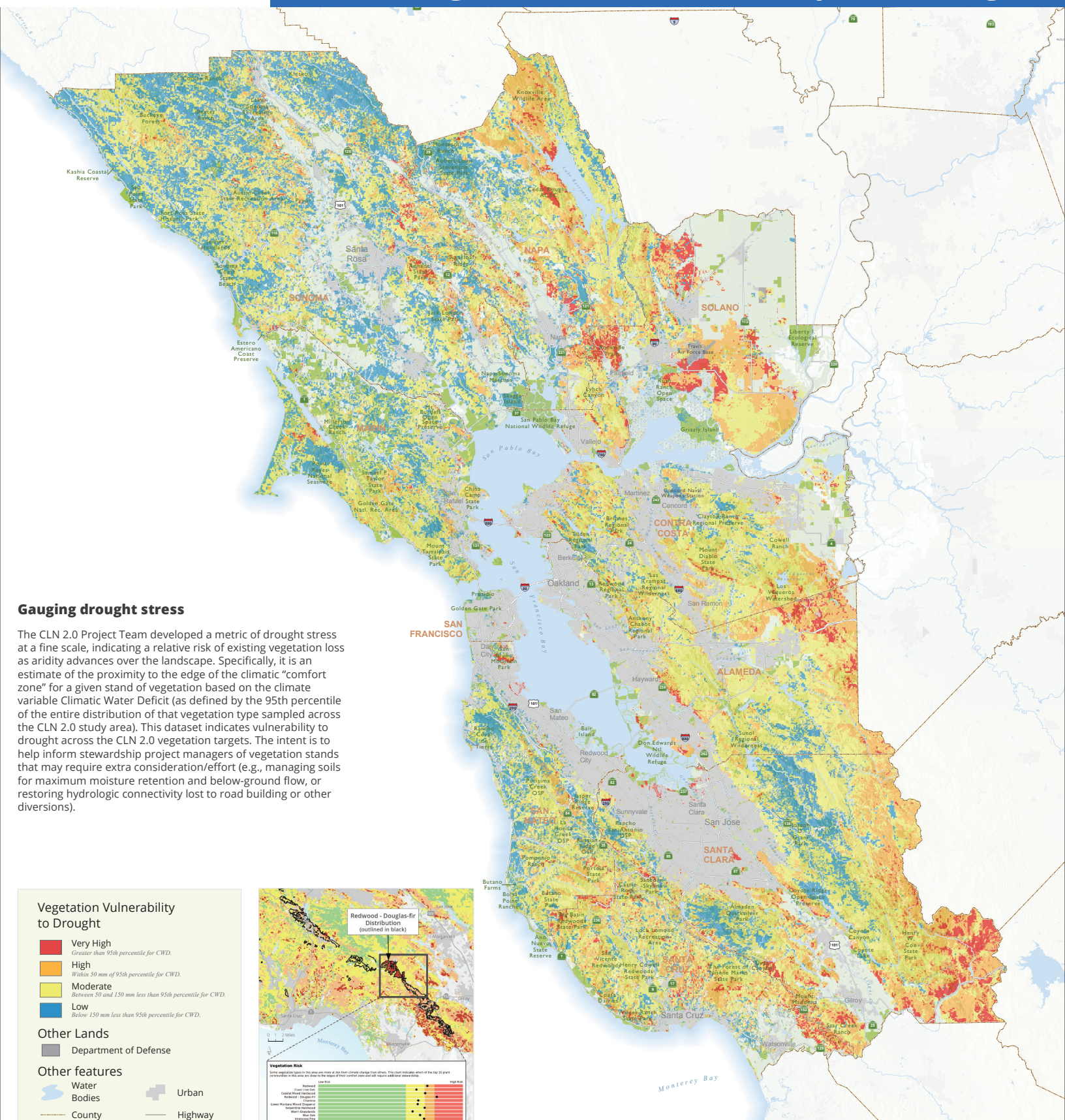


Vegetation Vulnerability to Drought



Gauging drought stress

The CLN 2.0 Project Team developed a metric of drought stress at a fine scale, indicating a relative risk of existing vegetation loss as aridity advances over the landscape. Specifically, it is an estimate of the proximity to the edge of the climatic "comfort zone" for a given stand of vegetation based on the climate variable Climatic Water Deficit (as defined by the 95th percentile of the entire distribution of that vegetation type sampled across the CLN 2.0 study area). This dataset indicates vulnerability to drought across the CLN 2.0 vegetation targets. The intent is to help inform stewardship project managers of vegetation stands that may require extra consideration/effort (e.g., managing soils for maximum moisture retention and below-ground flow, or restoring hydrologic connectivity lost to road building or other diversions).