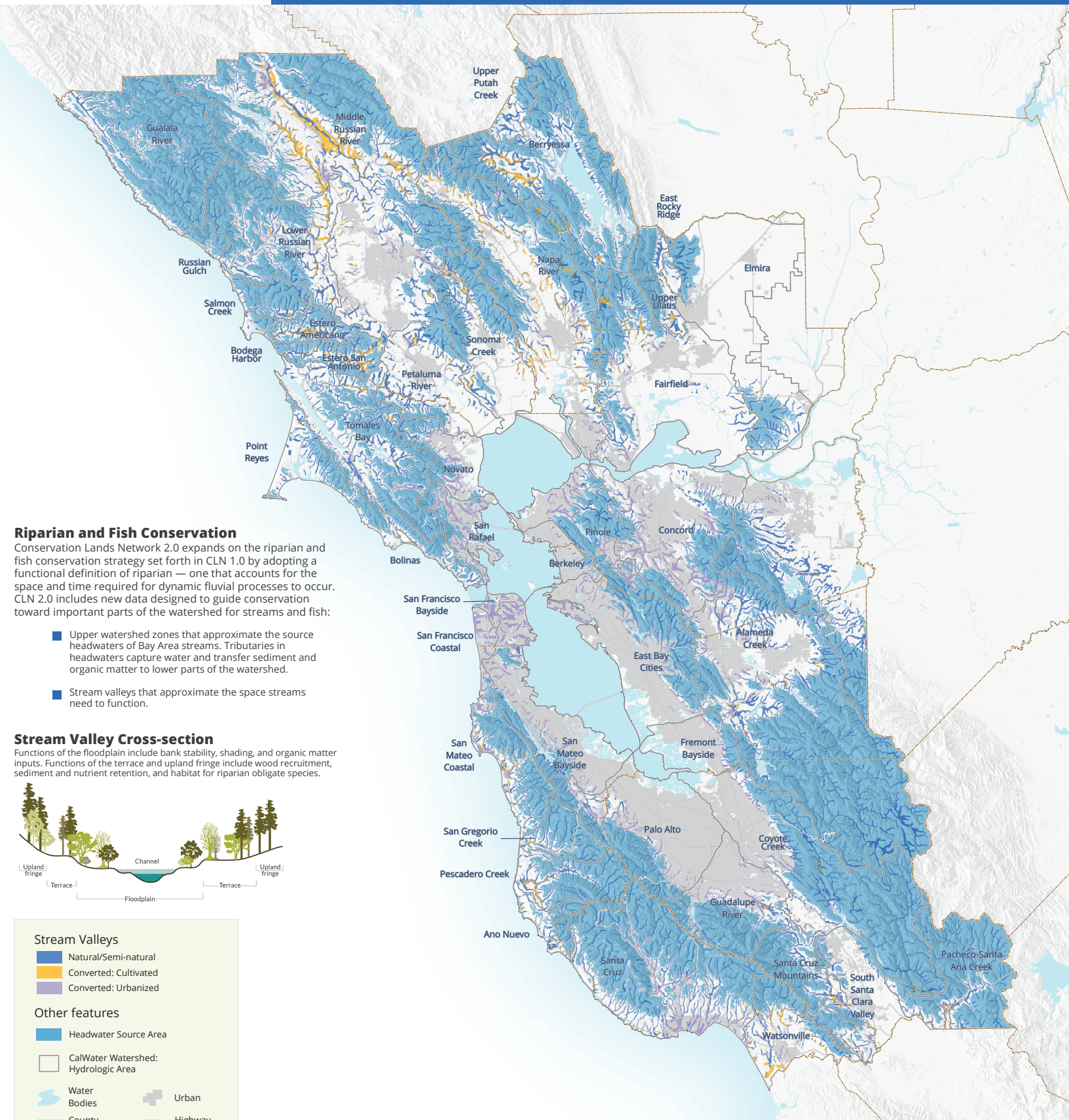




# Science Expansion

CONSERVATION LANDS NETWORK 2.0

# Stream Valleys & Headwater Source Areas



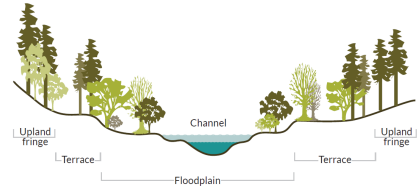
### Riparian and Fish Conservation

Conservation Lands Network 2.0 expands on the riparian and fish conservation strategy set forth in CLN 1.0 by adopting a functional definition of riparian — one that accounts for the space and time required for dynamic fluvial processes to occur. CLN 2.0 includes new data designed to guide conservation toward important parts of the watershed for streams and fish:

- Upper watershed zones that approximate the source headwaters of Bay Area streams. Tributaries in headwaters capture water and transfer sediment and organic matter to lower parts of the watershed.
- Stream valleys that approximate the space streams need to function.

### Stream Valley Cross-section

Functions of the floodplain include bank stability, shading, and organic matter inputs. Functions of the terrace and upland fringe include wood recruitment, sediment and nutrient retention, and habitat for riparian obligate species.



### Stream Valleys

- Natural/Semi-natural
- Converted: Cultivated
- Converted: Urbanized

### Other features

- Headwater Source Area
- CalWater Watershed: Hydrologic Area
- Water Bodies
- Urban
- County
- Highway

