



SONOMA COUNTY

RURAL CHARACTER SURVIVES WITH HELP FROM KEY POLICIES

Sonoma County's diverse landscapes—redwood forests and oak woodlands, rivers and wetlands, vineyards, grasslands, and small farms—are remarkably well preserved. This is largely due to urban growth boundaries around eight of nine cities and an open space district that helps to preserve farms. The keys to maintaining this natural bounty are protecting watershed and greenbelt lands and avoiding subdivision of agricultural lands.

OPPORTUNITIES

- **Guide growth into existing cities** and prevent inappropriate development to help preserve Sonoma County's rural character.
- **Support farming** with agricultural easements and policies to ensure local food production and preserve prime farmland.
- **Adopt policies that protect wetlands and forests** from conversion to higher-intensity land uses, to help preserve biodiversity and local water sources.

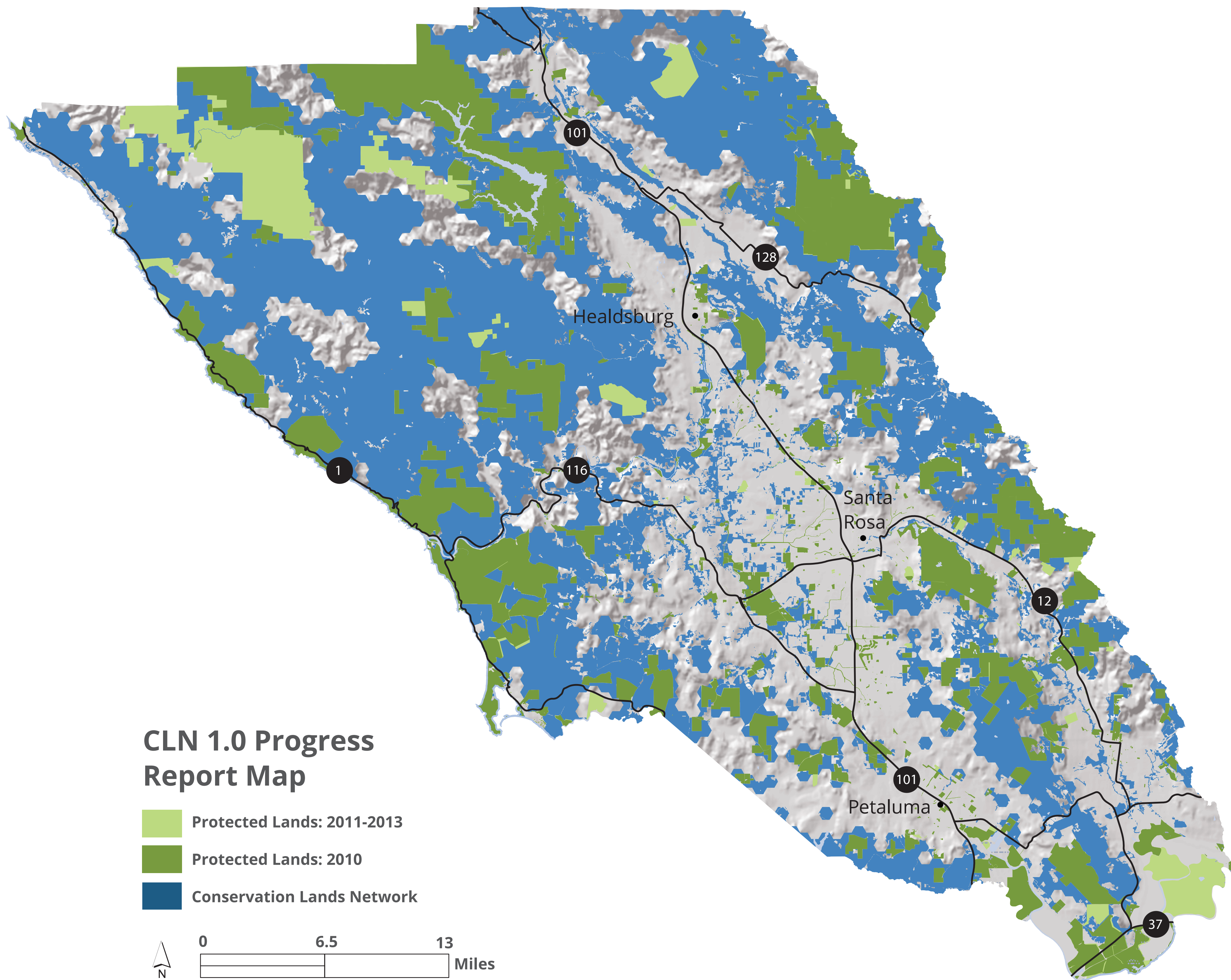
CONSERVATION IN ACTION

Sonoma County's agricultural and open space district used conservation agreements connecting six farms and other properties in the Laguna de Santa Rosa to form a protected greenbelt between Santa Rosa and Sebastopol.

OF NOTE

Sonoma County's 470,000 acres of forests and woodlands sequester an estimated 2.3 million tons of CO₂ per year—the equivalent of 400,000 cars.

COUNTY PROFILE FROM "GOLDEN LANDS, GOLDEN OPPORTUNITIES."





Protected Lands



Biodiversity and Habitat



Water Resources



People and Conservation

21% of total land in county is **PROTECTED**

ACRES IN THE **412,561** CONSERVATION LANDS NETWORK³

FIVE LARGEST OWNERS¹ OF PROTECTED LAND IN COUNTY (ACRES, FEE & EASEMENT)

MORE ACRES **14,164** ACCESSIBLE TO THE PUBLIC SINCE 2010¹

PROGRESS: FEE & EASEMENT
PROTECTED AREAS 2010-2013 **45,866**

483,456 POPULATION⁴

SONOMA COUNTY AG PRESERVATION & OPEN SPACE DISTRICT (SCAPOS D) **57,891**

218,257 PROTECTED ACRES 2013¹

CALIFORNIA STATE PARKS **37,131**

PROGRESS: PRIORITY 1 & 2 STREAMS

PROTECTED ACRES 2010² **172,391**

THE CONSERVATION FUND **19,664**

PROTECTED MILES 2010-2013 **31.2**

COUNTY REPRESENTS **16%** OF REGIONALLY PROTECTED LANDS

SONOMA LAND TRUST **16,765**

162.6 PROTECTED MILES 2013¹

US ARMY CORPS OF ENGINEERS (USACE) **16,035**

PROTECTED MILES 2010² **131.5**

TOTAL COUNTY SIZE (ACRES) 1,016,737

¹BPAD 2013
²BPAD 2010
³CLN 1.0 Progress Report Updated Basemap (2014)
⁴American Community Survey 2012 5 year summary file