



SOLANO COUNTY

WETLANDS, FARMLAND, HILLS CAN THRIVE WITH FOCUSED ACTION

Oak-studded hills, miles of riverfront, and the Suisun Marsh—which contains more than 10% of California’s remaining natural wetlands—give Solano outstanding wildlife habitat and watersheds. It also has abundant productive farmland, thanks in part to county policies that help direct growth into cities. Suburban expansion threatens these resources, however, and the diverse population has little access to open space.

OPPORTUNITIES

- **Help farmers** build value-added operations and provide economic incentives to keep farming. These essential steps will preserve Solano’s valuable agriculture sector—the county’s second-largest economic driver.
- **Create an open space district**
Solano is the only Bay Area county without one—to preserve farm and grazing land and provide much-needed public access to the outdoors.

CONSERVATION IN ACTION

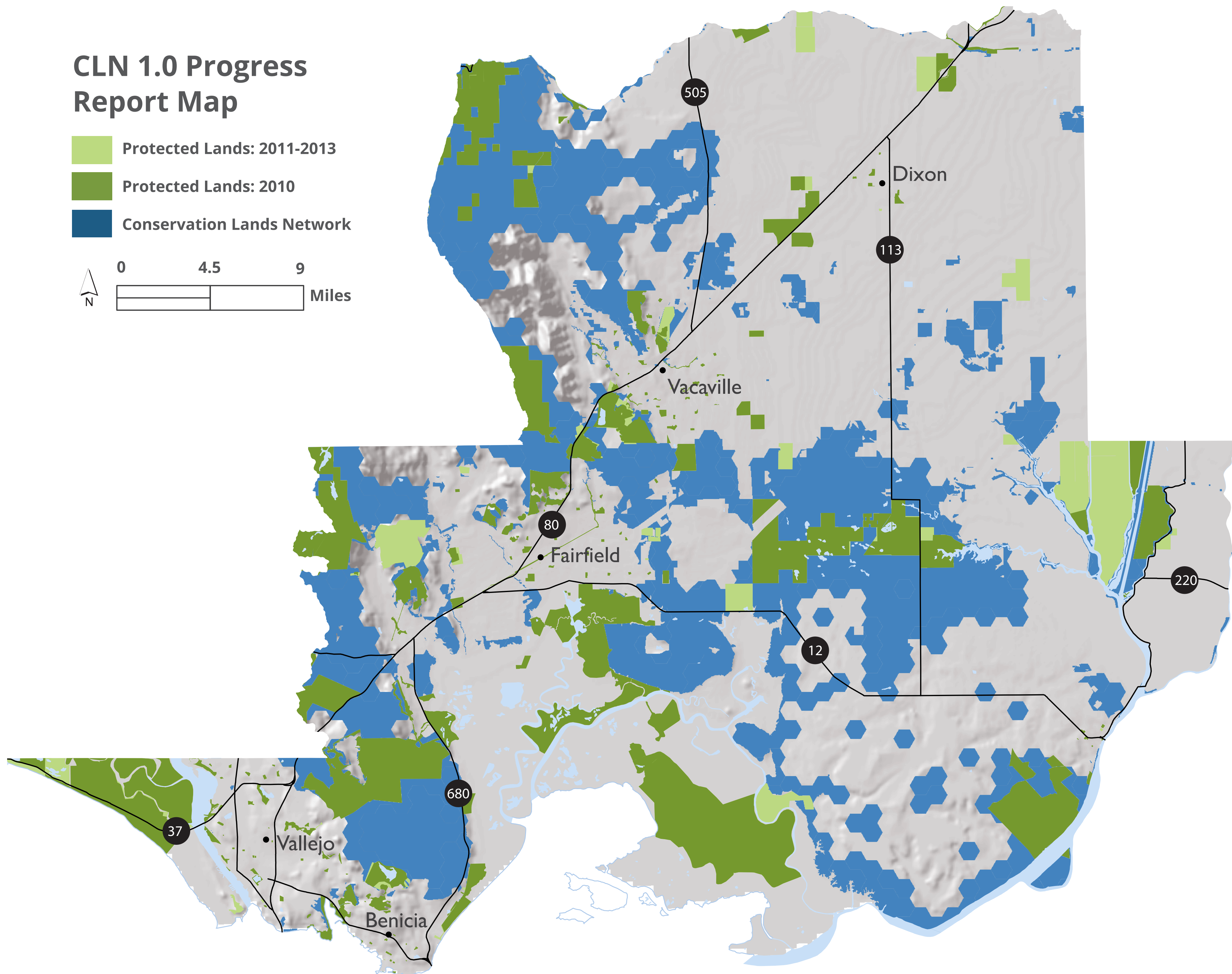
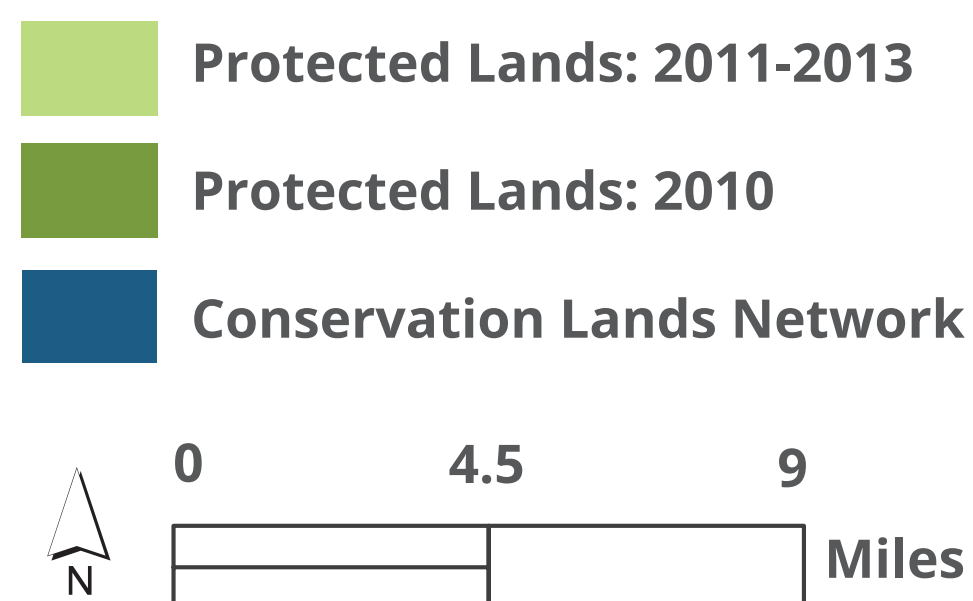
Conservation groups are working to acquire easements—with local, state, and federal funding—for prime agricultural lands between Dixon and Davis, protecting a successful economic enterprise while keeping the two cities distinct.

OF NOTE

Solano agriculture’s value was over \$268 million in 2007, up nearly 15% from 2006, according to the July 2008 Solano County Annual Crop and Livestock Report.

COUNTY PROFILE FROM “GOLDEN LANDS, GOLDEN OPPORTUNITIES.”

CLN 1.0 Progress Report Map





Protected Lands



Biodiversity and Habitat



Water Resources



People and Conservation

14% of total land in county is **PROTECTED**

PROGRESS: FEE & EASEMENT PROTECTED AREAS 2010-2013 15,752

78,154 PROTECTED ACRES 2013¹

PROTECTED ACRES 2010² 62,400

ACRES IN THE **129,882** CONSERVATION LANDS NETWORK³

414,209 POPULATION⁴

COUNTY REPRESENTS **6%** OF REGIONALLY PROTECTED LANDS

FIVE LARGEST OWNERS¹ OF PROTECTED LAND IN COUNTY (ACRES, FEE & EASEMENT)

CALIFORNIA DEPARTMENT OF FISH AND WILDLIFE **24,069**

SOLANO LAND TRUST **19,402**

CALIFORNIA STATE LANDS COMMISSION **6,965**

CITY OF VACAVILLE **3,729**

CITY OF VALLEJO **3,639**

TOTAL COUNTY SIZE (ACRES) 544,112

MORE ACRES **10,393** ACCESSIBLE TO THE PUBLIC SINCE 2010¹

PROGRESS: PRIORITY 1 & 2 STREAMS PROTECTED MILES 2010-2013 0.4

7.9 PROTECTED MILES 2013¹

PROTECTED MILES 2010² 7.4

¹BPAD 2013
²BPAD 2010
³CLN 1.0 Progress Report Updated Basemap (2014)
⁴American Community Survey 2012 5 year summary file