



SANTA CRUZ COUNTY

BLUEPRINT GUIDES PROTECTION OF REGIONAL NEIGHBOR

Santa Cruz County is a natural refuge—for plants, wildlife, and for people—from the urban world that neighbors the County. The County's *Conservation Blueprint* identifies eight areas for protection of water resources, wildlife habitat, working lands, and recreational opportunities. It estimates that by protecting 50,000 acres of land in those areas, Santa Cruz County will remain as a refuge for future generations.

OPPORTUNITIES

- **Protect natural habitat from development.**
Under current zoning 17,000 more housing units could be built, many of them in rural areas, breaking up the natural habitat.
- **Emphasize protection through innovative tools** including conservation easements and stewardship incentives. The Conservation Blueprint recommends that acquisition not be the dominant way of protecting land in the future.
- **Protect for multiple benefits** that offer a variety of values including wildlife habitat and connectivity, water supply and quality, working lands, and recreational and educational opportunities.

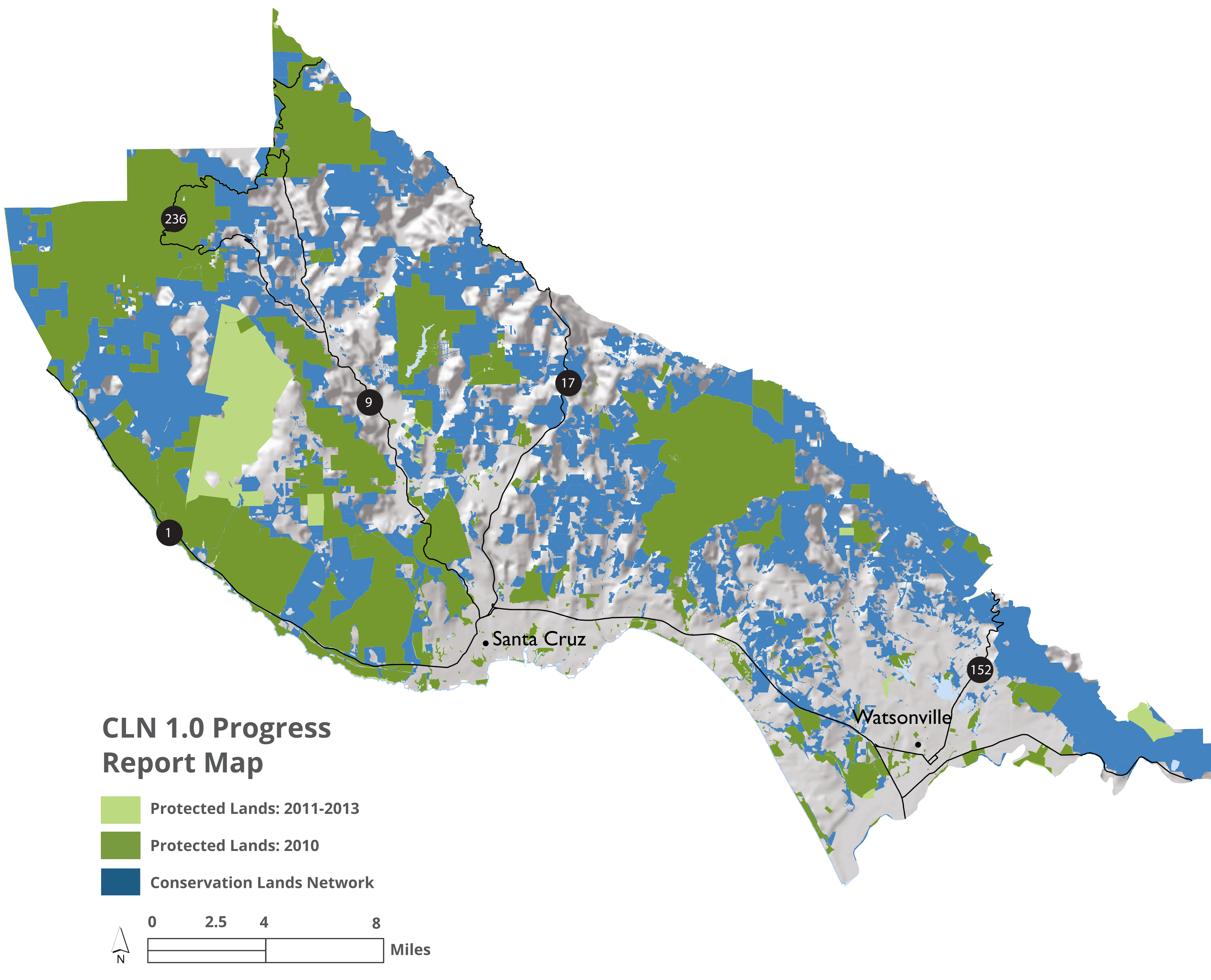
CONSERVATION IN ACTION

Most of Santa Cruz County is productive working land – farm, timber, and rangeland. The Conservation Blueprint prioritizes the protection of these lands as both economic and natural resources.

OF NOTE

Santa Cruz County is home to some impressive protected areas: California's first state park, Big Basin, was created to protect the majestic redwoods. And The Monterey Bay is so rich in marine life that it has been declared a national marine sanctuary.

SUMMARIZED FROM "HIGHLIGHTS FROM A CONSERVATION BLUEPRINT: AN ASSESSMENT AND RECOMMENDATIONS FROM THE LAND TRUST OF SANTA CRUZ COUNTY."





Protected Lands



Biodiversity and Habitat



Water Resources



People and Conservation

31% of total land in county is **PROTECTED**

PROGRESS: FEE & EASEMENT
PROTECTED AREAS 2010-2013 **10,102**

87,195 PROTECTED ACRES 2013¹

PROTECTED ACRES 2010² **77,093**

ACRES IN THE **91,685** CONSERVATION LANDS NETWORK³

262,340 POPULATION⁴

COUNTY REPRESENTS **6%** OF REGIONALLY PROTECTED LANDS

FIVE LARGEST OWNERS¹ OF PROTECTED LAND IN COUNTY (ACRES, FEE & EASEMENT)

CALIFORNIA STATE PARKS	45,797
LIVING LANDSCAPES INITIATIVE PARTNERS	8,532
COAST DAIRIES AND LAND COMPANY (TPL)	6,565
CITY OF SANTA CRUZ	5,876
LAND TRUST OF SANTA CRUZ COUNTY	4,062

MORE ACRES **352** ACCESSIBLE TO THE PUBLIC SINCE 2010¹

PROGRESS: PRIORITY 1 & 2 STREAMS
PROTECTED MILES 2010-2013 **1.5**

79.1 PROTECTED MILES 2013¹

PROTECTED MILES 2010² **77.6**

TOTAL COUNTY SIZE (ACRES) 285,713

¹BPAD 2013
²BPAD 2010
³CLN 1.0 Progress Report Updated Basemap (2014)
⁴American Community Survey 2012 5 year summary file