



SAN MATEO COUNTY

ACCESSIBLE COAST, FORESTS
SUSTAIN PEOPLE AND WILDLIFE

San Mateo County's spectacular coastline lies within easy reach of 3 million people. The county is home to old-growth redwood forests, rare species, prime farmland, and four regional north-south trails. With the protection of key corridors and careful stewardship, we can preserve these lands for generations.

OPPORTUNITIES

- **Protect the coast** to safeguard watersheds, help complete skyline-to-sea trails, preserve wildlife migration corridors, and support the county's unique coastal agriculture.
- **Restore baylands and urban creeks** (many now diverted to culverts and pipes) to provide essential habitat.
- **Prevent subdivision and large-lot residential development** to help protect up to 40,000 acres of farmland and natural areas.
- **Fund park maintenance** to keep San Mateo's natural areas healthy and accessible to the public.

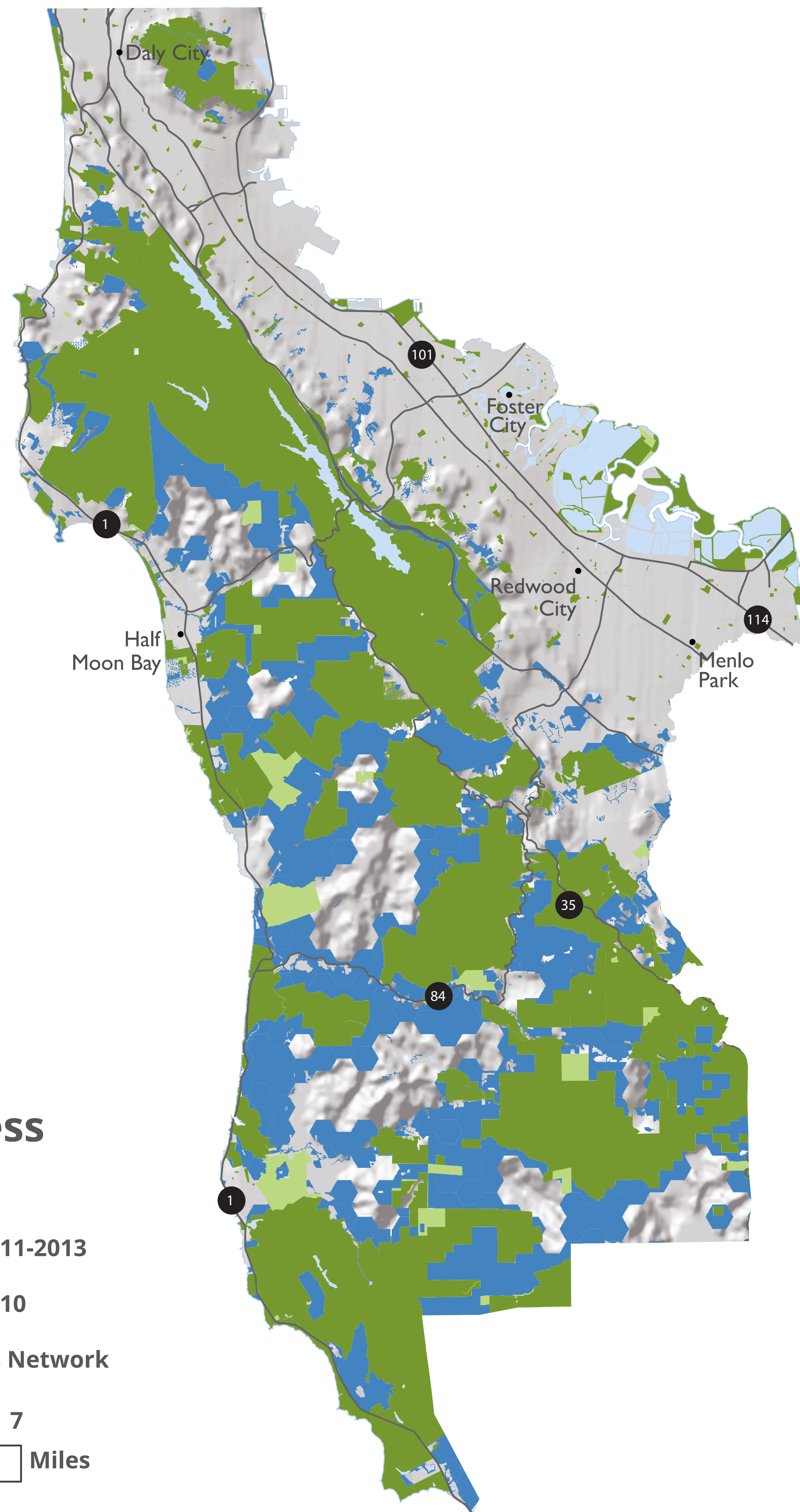
CONSERVATION IN ACTION

The first habitat conservation plan in the nation, adopted in 1983, protects several endangered and threatened native butterfly species in San Bruno Mountain State and County Park.




OF NOTE

San Mateo County parks and open space areas record more than 5 million visits every year.

COUNTY PROFILE FROM "GOLDEN LANDS, GOLDEN OPPORTUNITIES."



CLN 1.0 Progress Report Map

-  Protected Lands: 2011-2013
-  Protected Lands: 2010
-  Conservation Lands Network





Protected Lands



Biodiversity and Habitat



Water Resources



People and Conservation

41% of total land in county is **PROTECTED**

PROGRESS: FEE & EASEMENT
PROTECTED AREAS 2010-2013 **4,828**

118,057 PROTECTED ACRES 2013¹

PROTECTED ACRES 2010² **113,229**

ACRES IN THE **57,939** CONSERVATION LANDS NETWORK³

COUNTY REPRESENTS **9%** OF REGIONALLY PROTECTED LANDS

FIVE LARGEST OWNERS¹ OF PROTECTED LAND IN COUNTY (ACRES, FEE & EASEMENT)

MIDPENINSULA REGIONAL OPEN SPACE DISTRICT (MROSD)	25,407
SF PUBLIC UTILITIES COMMISSION (SFPUC)	21,998
PENINSULA OPEN SPACE TRUST (POST)	17,168
CALIFORNIA STATE PARKS	16,959
SAN MATEO COUNTY PARKS AND RECREATION DEPARTMENT	13,664

PROGRESS: PRIORITY 1 & 2 STREAMS

PROTECTED MILES 2010-2013 **4**

78 PROTECTED MILES 2013¹

PROTECTED MILES 2010² **74**

721,183 POPULATION⁴

TOTAL COUNTY SIZE (ACRES) 290,479

¹BPAD 2013
²BPAD 2010
³CLN 1.0 Progress Report Updated Basemap (2014)
⁴American Community Survey 2012 5 year summary file