



# SAN FRANCISCO COUNTY

RENOWNED PARKS, RARE NATURAL AREAS ATTRACT LOCALS, TOURISTS

With beaches, wetlands, Golden Gate Park, a substantial portion of the Golden Gate National Recreation Area, and significant habitat for native plants and animals, San Francisco has exceptional natural resources. It also has exceptional need: it's the nation's second most densely populated city, but the neighborhoods with the most people have the least parkland.

**OPPORTUNITIES**

- **Create more parks, natural areas, and places to play** by ensuring that open space and ecological preservation are priorities in development and planning projects.
- **Manage the network of natural areas** throughout the city to preserve and connect rare habitat, restore creeks, and give children access to wild places.
- **Complete the Blue Greenway**, a 13-mile corridor along the city's southeastern waterfront that will bring green space, recreational opportunities, and Bay access to an underserved part of the city.

**CONSERVATION IN ACTION**




The Crissy Field restoration transformed the former Presidio airstrip into a thriving tidal marsh, learning center, and popular place to bike, run, and play. It involved thousands of volunteers plus public and private funding.

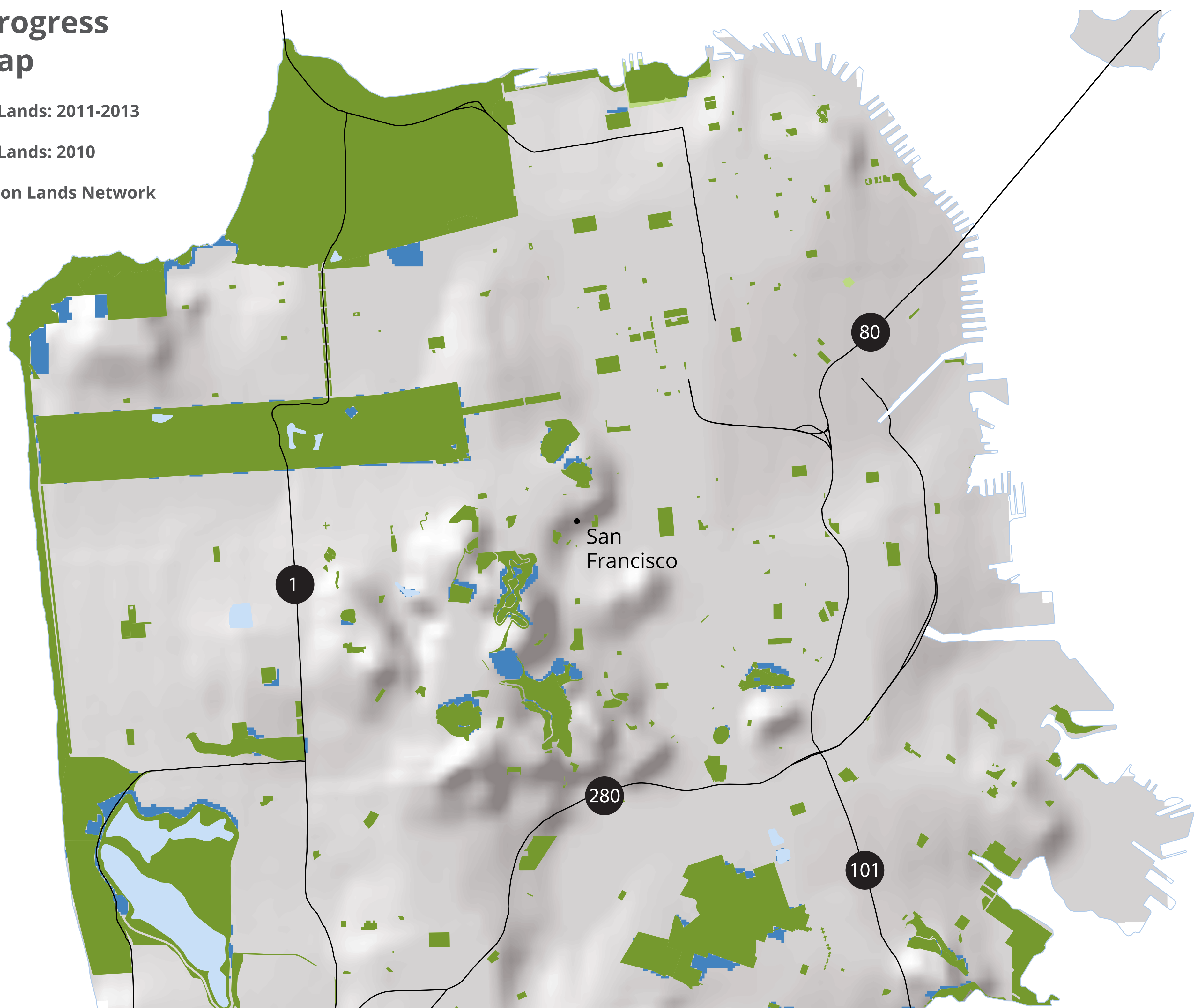
**OF NOTE**

Golden Gate Park alone gets about 15 million visitors each year, nearly half of them nonresidents, and city lands support more than 300 species of native plants.

COUNTY PROFILE FROM "GOLDEN LANDS, GOLDEN OPPORTUNITIES."

**CLN 1.0 Progress Report Map**

-  Protected Lands: 2011-2013
-  Protected Lands: 2010
-  Conservation Lands Network





**Protected Lands**



**Biodiversity and Habitat**



**Water Resources**



**People and Conservation**

**19%** of total land in county is **PROTECTED**

**PROGRESS: FEE & EASEMENT**  
PROTECTED AREAS 2010-2013 **28**

**5,745** PROTECTED ACRES 2013<sup>1</sup>

PROTECTED ACRES 2010<sup>2</sup> **5,717**

ACRES IN THE **370** CONSERVATION LANDS NETWORK<sup>3</sup>

COUNTY REPRESENTS **0.4%** OF REGIONALLY PROTECTED LANDS

**FIVE LARGEST OWNERS<sup>1</sup> OF PROTECTED LAND IN COUNTY (ACRES, FEE & EASEMENT)**

CITY AND COUNTY OF SAN FRANCISCO	2,625
US NATIONAL PARK SERVICE (NPS)	2,141
SF PUBLIC UTILITIES COMMISSION (SFPUC)	642
CALIFORNIA STATE PARKS	206
US FISH AND WILDLIFE SERVICE (FWS)	109

MORE ACRES **28** ACCESSIBLE TO THE PUBLIC SINCE 2010<sup>1</sup>

**807,755** POPULATION<sup>4</sup>

TOTAL COUNTY SIZE (ACRES) **30,238**

<sup>1</sup>BPAD 2013  
<sup>2</sup>BPAD 2010  
<sup>3</sup>CLN 1.0 Progress Report Updated Basemap (2014)  
<sup>4</sup>American Community Survey 2012 5 year summary file