

# NAPA COUNTY

PREMIER WINE REGION VALUES  
VINEYARDS, VALLEY, BIODIVERSITY

Napa put California wine on the world map, and the Valley's grapes regularly draw the state's highest average price per ton. Quick to recognize the value of its vineyards—as well as its exceptional biodiversity and water resources—Napa was the first Bay Area county to establish strong protection for agriculture, which led to today's city-centered growth policies. The challenge now is to preserve the county's natural abundance and expand opportunities for people to enjoy it.

**OPPORTUNITIES**

- **Fund Napa's newly created park district** to take an essential step toward increasing public access to nature.
- **Tighten growth controls** to halt fragmentation and loss of agricultural lands stemming from rural development.
- **Develop trails**, like the Napa Crest and Napa River trails, to provide opportunities for enjoyment and education

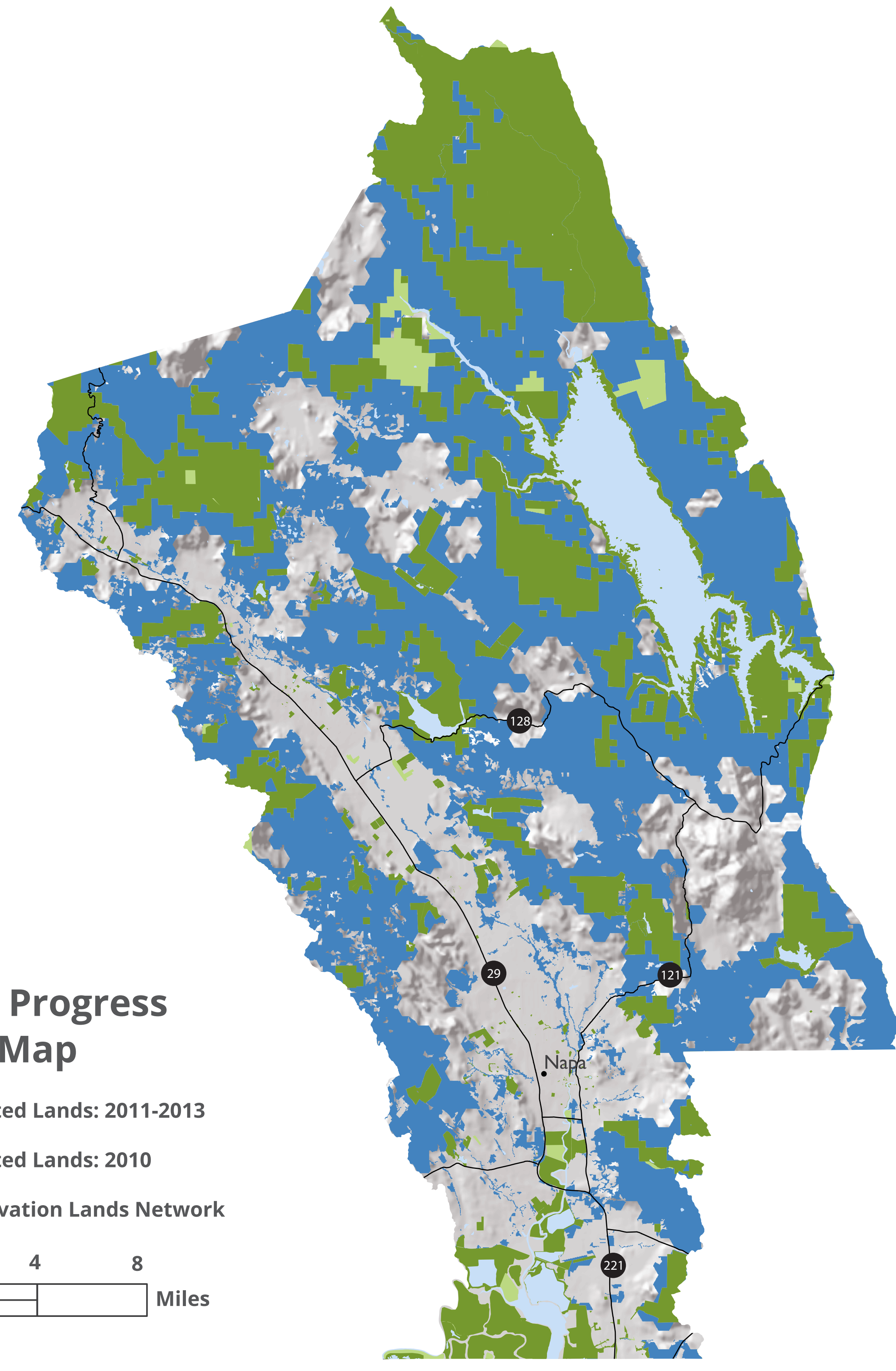
**CONSERVATION IN ACTION**

Napa voters committed to protecting farmlands and natural areas by approving 1990's Measure J, which requires a citizens' vote to develop these lands. In 2008 Measure P extended the policy, protecting 540,000 acres for 50 years.




**OF NOTE**

The wine industry generates \$9.5 billion annually for Napa County, according to a 2005 study by MKF Research for Napa Valley Vintners.

COUNTY PROFILE FROM "GOLDEN LANDS, GOLDEN OPPORTUNITIES."



CLN 1.0 Progress Report Map

-  Protected Lands: 2011-2013
-  Protected Lands: 2010
-  Conservation Lands Network

0 2 4 8 Miles



**Protected Lands**



**Biodiversity and Habitat**



**Water Resources**



**People and Conservation**

**29%** of total land in county is **PROTECTED**

**PROGRESS: FEE & EASEMENT**  
PROTECTED AREAS 2010-2013 **4,004**

**145,257** PROTECTED ACRES 2013<sup>1</sup>

PROTECTED ACRES 2010<sup>2</sup> **141,253**

ACRES IN THE **201,453** CONSERVATION LANDS NETWORK<sup>3</sup>

COUNTY REPRESENTS **11%** OF REGIONALLY PROTECTED LANDS

**FIVE LARGEST OWNERS<sup>1</sup> OF PROTECTED LAND IN COUNTY (ACRES, FEE & EASEMENT)**

US BUREAU OF LAND MANAGEMENT (BLM)	<b>35,464</b>
CALIFORNIA DEPARTMENT OF FISH AND WILDLIFE	<b>29,499</b>
US BUREAU OF RECLAMATION	<b>26,612</b>
LAND TRUST OF NAPA COUNTY	<b>22,358</b>
CALIFORNIA STATE PARKS	<b>5,623</b>

**PROGRESS: PRIORITY 1 & 2 STREAMS**  
PROTECTED MILES 2010-2013 **2.8**

**58.2** PROTECTED MILES 2013<sup>1</sup>

PROTECTED MILES 2010<sup>2</sup> **55.4**

**136,644** POPULATION<sup>4</sup>

**TOTAL COUNTY SIZE (ACRES) 505,857**

<sup>1</sup>BPAD 2013  
<sup>2</sup>BPAD 2010  
<sup>3</sup>CLN 1.0 Progress Report Updated Basemap (2014)  
<sup>4</sup>American Community Survey 2012 5 year summary file