

CONTRA COSTA COUNTY

SUBURBAN MEETS RURAL AT THE FOOT OF MT. DIABLO

Contra Costa's intricate landscape ranges from Mount Diablo to a fertile patchwork of farmland and ranchland. Its many watersheds support over 1,100 species, and drain into an aquatic ecosystem that stretches from San Pablo Bay to the Sacramento-San Joaquin River Delta. Directing growth into existing towns will help preserve these outstanding natural resources.

OPPORTUNITIES

- **Stop subdivision** and development of farms, ranches, and natural areas to preserve wildlife corridors and agricultural heritage.
- **Prevent development on Delta watershed lands** to protect California's drinking water and help preserve a fragile ecosystem.
- **Build parks and trails on the North Richmond shoreline** to give underserved residents opportunities to enjoy the Bay.
- **Preserve Concord Naval Weapons Station** open space to protect habitat and enable easy access to nature via BART.

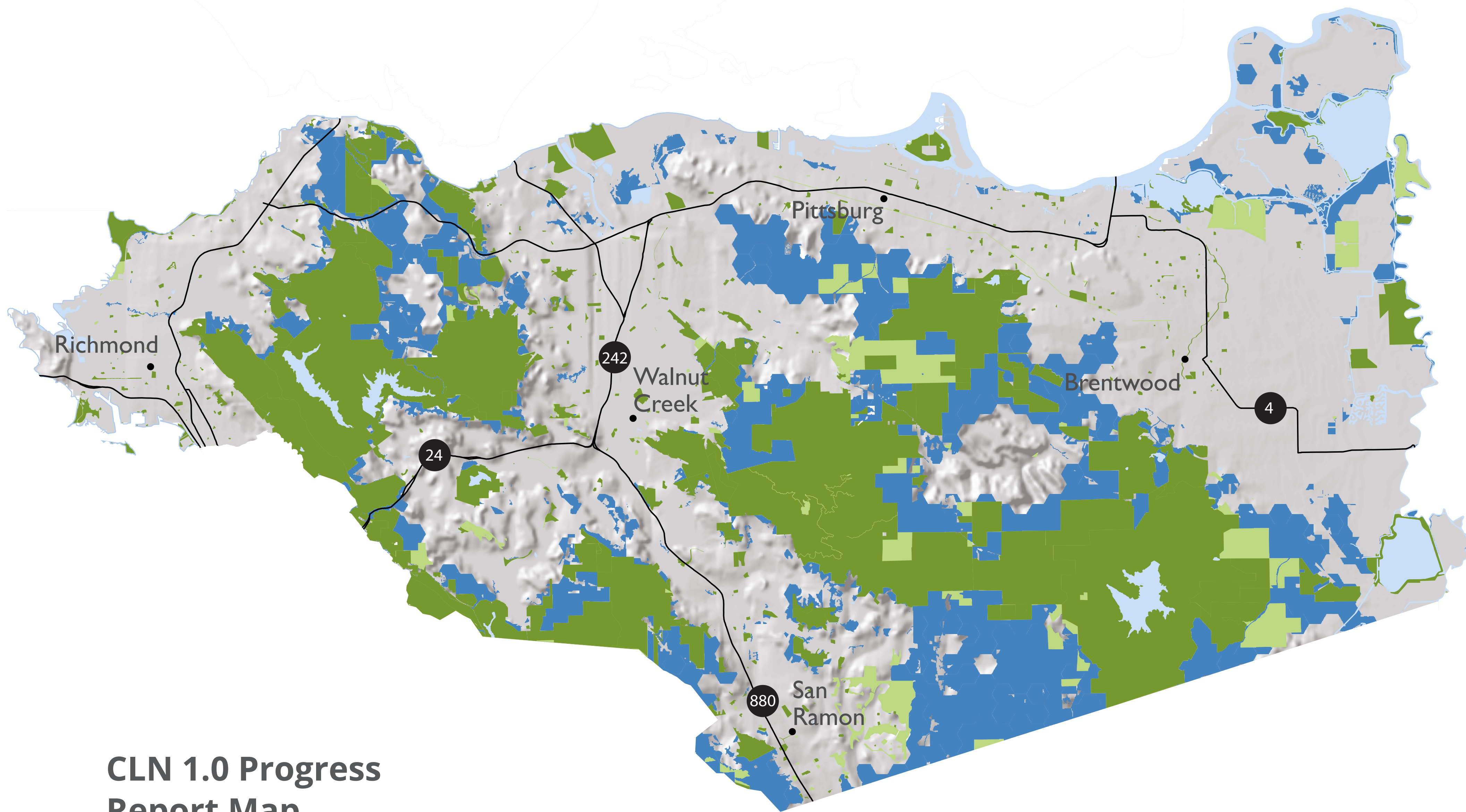
CONSERVATION IN ACTION

The Environmental Studies Academy in Martinez is creating the next generation of environmental problem solvers with a science-based curriculum for at-risk high school students that includes restoring Alhambra Creek.

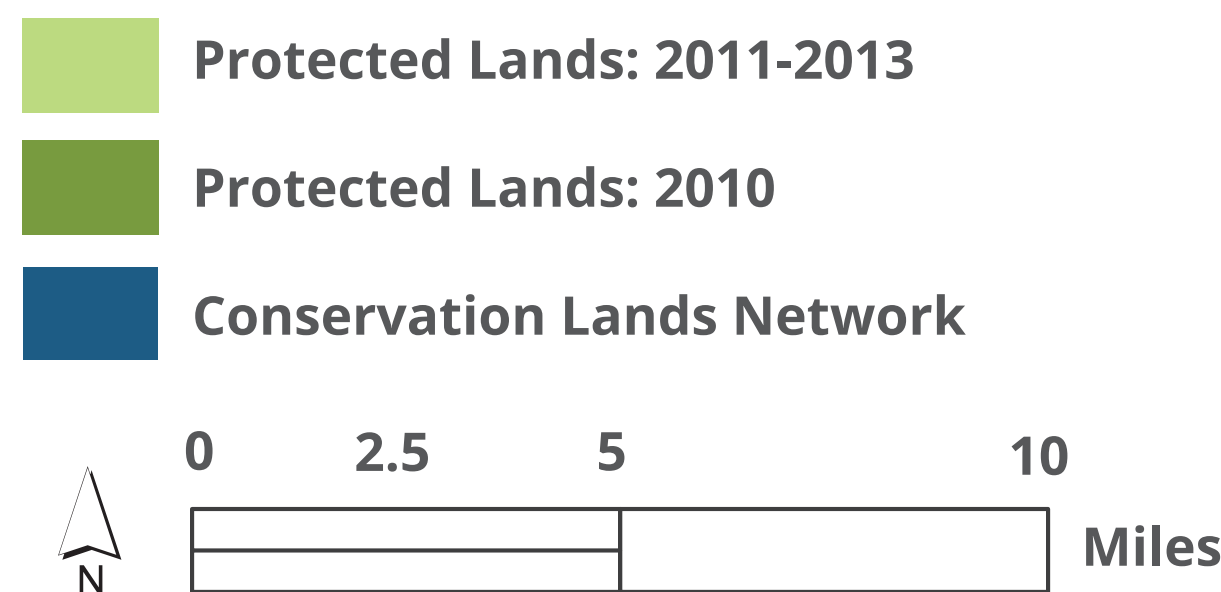
OF NOTE

Contra Costa's agricultural core grows 45 crops, including stone fruit, vegetables, olives, wine grapes, and more than enough fresh sweet corn to feed the Bay Area.

COUNTY PROFILE FROM "GOLDEN LANDS, GOLDEN OPPORTUNITIES."



CLN 1.0 Progress Report Map





Protected Lands



Biodiversity and Habitat



Water Resources



People and Conservation

29% of total land in county is **PROTECTED**

PROGRESS: FEE & EASEMENT PROTECTED AREAS 2010-2013 13,690

141,994 PROTECTED ACRES 2013¹

PROTECTED ACRES 2010² 128,303

ACRES IN THE 80,206 CONSERVATION LANDS NETWORK³

1,052,047 POPULATION⁴

COUNTY REPRESENTS 10% OF REGIONALLY PROTECTED LANDS

FIVE LARGEST OWNERS¹ OF PROTECTED LAND IN COUNTY (ACRES, FEE & EASEMENT)

EAST BAY REGIONAL PARK DISTRICT (EBRPD) 49,431

CALIFORNIA STATE PARKS 27,149

EAST BAY MUNICIPAL UTILITY DISTRICT (EBMUD) 19,444

CONTRA COSTA WATER DISTRICT 18,085

CALIFORNIA DEPARTMENT OF WATER RESOURCES (DWR) 3,993

TOTAL COUNTY SIZE (ACRES) 481,394

MORE ACRES 5,368 ACCESSIBLE TO THE PUBLIC SINCE 2010¹

PROGRESS: PRIORITY 1 & 2 STREAMS PROTECTED MILES 2010-2013 0

35.6 PROTECTED MILES 2013¹

PROTECTED MILES 2010² 35.6

¹BPAD 2013
²BPAD 2010
³CLN 1.0 Progress Report Updated Basemap (2014)
⁴American Community Survey 2012 5 year summary file