



ALAMEDA COUNTY

EXPANDING FOCUS FROM HILLS TO URBAN PARKS, RURAL LANDS

Alameda County's long record of successful conservation efforts includes protecting scenic East Bay hills and ridgelines and creating much-loved parks. Among the key needs now are preserving the county's rural areas—a mosaic of ranchlands, vineyards, and wildlife habitat—and meeting the demand for urban parks in the county's densely populated west.

OPPORTUNITIES

- **Curb sprawl in the Tri-Valley area** to preserve habitat for rare and endangered species, conserve working lands, and protect the Livermore groundwater basin and watersheds—especially the rare alkali sink ecosystem.
- **Invest in urban parks** to ensure that all city residents have accessible, clean, safe places to gather and play outdoors.
- **Protect the Bay shoreline**, Alameda Creek, and their watersheds to increase public access and preserve sensitive aquatic habitat.

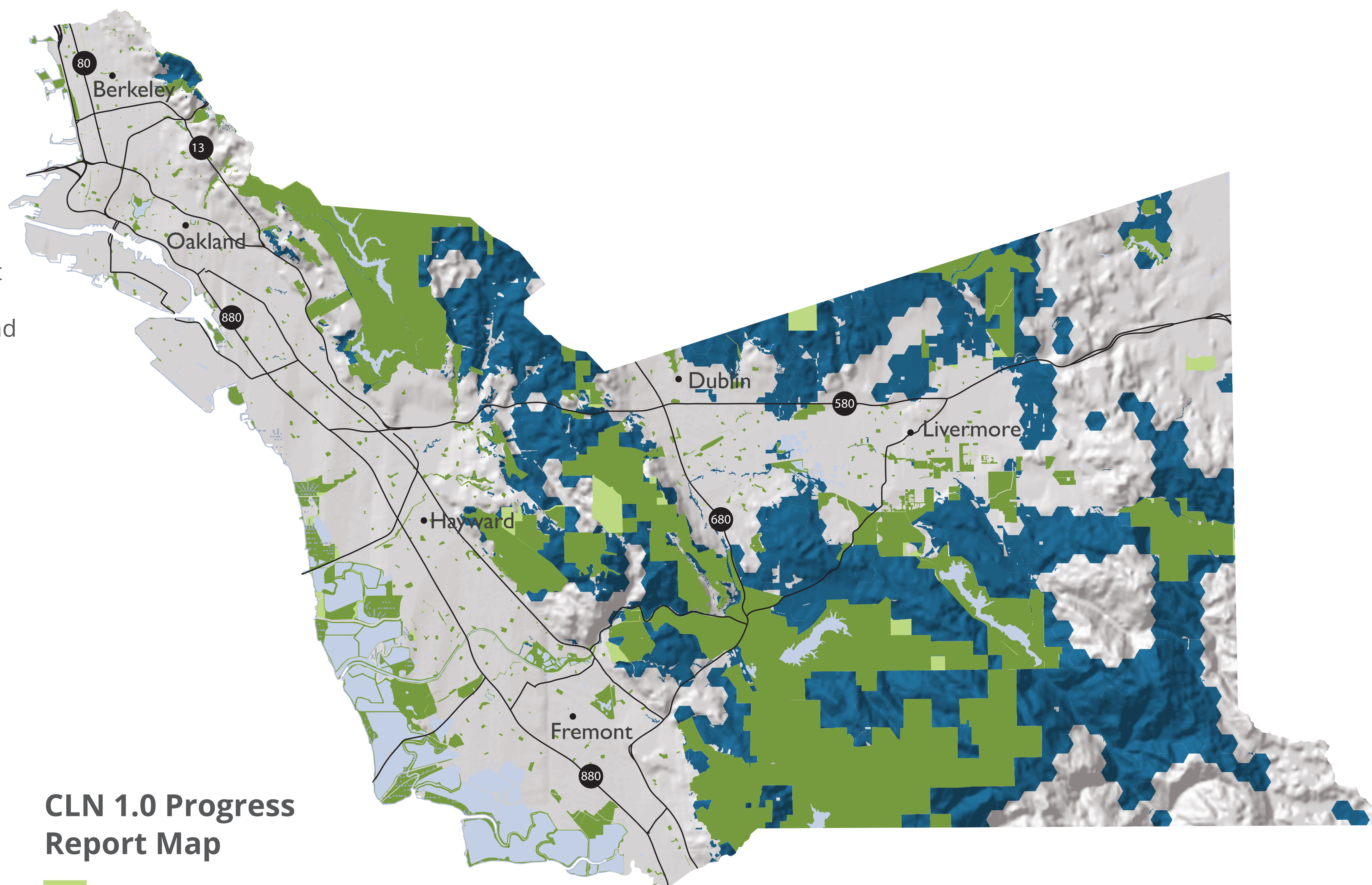
CONSERVATION IN ACTION

The East Alameda County Conservation Strategy brings together city governments and county, state, and federal agencies to create a conservation blueprint for more than 271,000 acres in the upper Alameda Creek Watershed.

OF NOTE

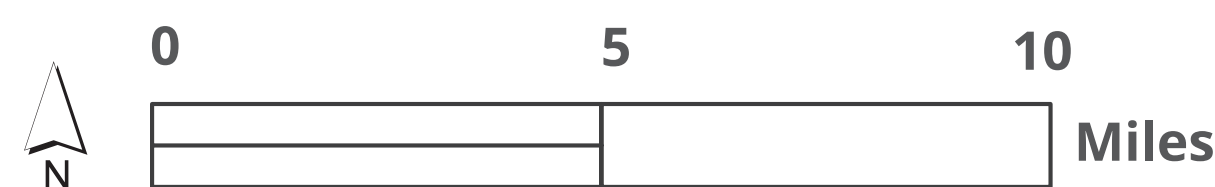
The golden eagle, red-legged frog, California tiger salamander, burrowing owl, and San Joaquin kit fox are among Alameda County's rare and endangered animals.

COUNTY PROFILE FROM "GOLDEN LANDS, GOLDEN OPPORTUNITIES."



CLN 1.0 Progress Report Map

- Protected Lands: 2011-2013
- Protected Lands: 2010
- Conservation Lands Network




Protected Lands



Biodiversity and Habitat



Water Resources



People and Conservation

25% of total land in county is **PROTECTED**

PROGRESS: FEE & EASEMENT
PROTECTED AREAS 2010-2013 **2,752**

120,218 PROTECTED ACRES 2013¹

PROTECTED ACRES 2010² **117,465**

ACRES IN THE **113,747** CONSERVATION LANDS NETWORK³

COUNTY REPRESENTS **9%** OF REGIONALLY PROTECTED LANDS

FIVE LARGEST OWNERS¹ OF PROTECTED LAND IN COUNTY (ACRES, FEE & EASEMENT)

EAST BAY REGIONAL PARK DISTRICT (EBRPD) **40,313**

SF PUBLIC UTILITIES COMMISSION (SFPUC) **23,875**

US FISH AND WILDLIFE SERVICE (FWS) **13,205**

CALIFORNIA STATE PARKS **10,247**

EAST BAY MUNICIPAL UTILITY DISTRICT (EBMUD) **7,315**

PROGRESS: PRIORITY 1 & 2 STREAMS

PROTECTED MILES 2010-2013 **0.8**

69 PROTECTED MILES 2013¹

PROTECTED MILES 2010² **68.2**

1,515,136 POPULATION⁴

TOTAL COUNTY SIZE (ACRES) **476,565**

¹BPAD 2013
²BPAD 2010
³CLN 1.0 Progress Report Updated Basemap (2014)
⁴American Community Survey 2012 5 year summary file