

## Appendix: Habitat & Biodiversity

### Conservation Indicator: Biodiversity and Habitat

Biodiversity is defined as “the complex of living organisms, their physical environment, the interactions among these organisms, and how they array themselves in the physical environment.” The Conservation Lands Network uses habitat and rare landscapes—specifically the location and rarity of vegetation types—as indicators for biodiversity viability in the Bay Area. Biodiversity and Habitat **Progress Metrics** include additional acres protected of habitats and rare landscapes, as counted toward the 52 individual vegetation type acreage targets set forth in the CLN 1.0.

### Protection of habitat and rare landscapes

**Figure: Additional protected acreage by vegetation type** (Note: same data as Figure 4.3 in the Progress Report body, but listed alphabetically rather than by greatest gain in progress toward goals.)

Vegetation Type	GOAL		THEN		NOW		Progress 2010-2013
	Total Acres	Acres Goal	2010 Acres	% of Goal 2010	2013 Acres	% of Goal 2013	
Barren/Rock	7,195	5,444	1,419	26%	1,639	30%	220
Bishop Pine Forest	7,218	5,158	3,951	77%	4,015	78%	63
Black Oak Forest / Woodland	4,189	3,538	334	9%	709	20%	375
Blue Oak Forest / Woodland	191,279	98,915	70,068	71%	72,958	74%	2,890
Blue Oak- Foothill Pine Woodland	32,496	24,434	12,099	50%	12,392	51%	294
California Bay Forest	48,906	29,252	26,460	90%	27,871	95%	1,411
Canyon Live Oak Forest	7,147	5,388	1,448	27%	1,926	36%	478
Central Coast Riparian Forests	15,318	13,786	5,920	43%	6,290	46%	369
Chamise Chaparral	93,738	58,313	43,803	75%	44,998	77%	1,195
Coast Live Oak Forest / Woodland	238,875	126,712	94,010	74%	99,932	79%	5,922
Coastal Salt Marsh / Coastal Brackish Marsh	1,933	1,729	1,786	103%	1,805	104%	19
Coastal Scrub	103,271	70,464	64,174	91%	66,084	94%	1,910
Coastal Terrace Prairie	868	766	15	2%	75	10%	60
Cool Grasslands	76,659	63,040	44,196	70%	45,818	73%	1,621
Coulter Pine Forest	266	239	68	28%	68	28%	0
Douglas Fir Forest	170,487	124,141	66,342	53%	75,327	61%	8,984
Dune	1,121	1,009	582	58%	598	59%	16
Grand Fir	215	194	53	28%	53	28%	0
Hot Grasslands	269,19	134,70	53,966	40%	60,410	45%	6,444

Conservation Lands Network 1.0 Progress Report  
Appendix: Habitat and Biodiversity

	8	8					
Interior Live Oak Forest / Woodland	8,923	6,694	4,500	67%	4,590	69%	90
Juniper Woodland and Scrub	197	178	197	111%	197	111%	0
Knobcone Pine Forest	12,892	10,127	5,451	54%	5,566	55%	115
McNab Cypress	9,677	8,710	5,093	58%	5,464	63%	372
Mixed Chaparral	15,130	11,348	3,946	35%	3,946	35%	0
Mixed Conifer-Pine	426	319	135	42%	135	42%	0
Mixed Montane Chaparral	153,329	89,033	45,609	51%	47,294	53%	1,686
Moderate Grasslands	149,789	76,002	62,914	83%	65,670	86%	2,757
Montane Hardwoods	327,449	176,120	84,696	48%	92,012	52%	7,317
Monterey Cypress Forest	91	42	53	126%	53	126%	0
Monterey Pine Forest	2,664	1,325	1,849	140%	1,873	141%	23
Native Grassland	1,163	1,046	873	83%	874	84%	1
Oregon Oak Woodland	37,853	28,632	4,308	15%	4,895	17%	587
Permanent Freshwater Marsh	2,577	2,319	1,077	46%	1,092	47%	15
Ponderosa Pine Forest (Non-Maritime)	11,503	8,632	2,580	30%	2,580	30%	0
Pygmy Cypress	106	96	106	111%	106	111%	0
Redwood Forest	307,851	186,915	94,882	51%	110,011	59%	15,129
Sandhills	5,892	5,302	1,731	33%	1,910	36%	179
Santa Cruz Cypress	209	189	94	50%	94	50%	0
Sargent Cypress Forest / Woodland	2,955	2,660	2,318	87%	2,326	87%	8
Semi-Desert Scrub / Desert Scrub	45,900	34,440	25,360	74%	25,983	75%	623
Serpentine Barren	1,149	1,034	707	68%	857	83%	151
Serpentine Conifer	8,092	7,283	3,142	43%	3,351	46%	209
Serpentine Grassland	16,642	14,977	5,898	39%	6,414	43%	516
Serpentine Hardwoods	16,852	15,167	5,339	35%	5,510	36%	170
Serpentine Knobcone	455	409	187	46%	192	47%	5
Serpentine Leather-Oak Chaparral	39,369	31,494	18,002	57%	19,404	62%	1,401
Serpentine Riparian	135	121	57	47%	57	47%	0
Serpentine Scrub	1,026	924	547	59%	586	63%	39
Sycamore Alluvial Woodland	97	87	67	77%	68	78%	0
Tanoak Forest	28,063	25,257	2,040	8%	6,207	25%	4,167
Valley Oak Forest / Woodland	6,791	6,112	2,726	45%	2,750	45%	24
Warm Grasslands	520,832	262,044	129,056	49%	139,813	53%	10,757
Wet Meadows	205	185	47	25%	47	25%	0
<b>Grand Total</b>	<b>3,006,663</b>	<b>1,782,451</b>	<b>1,006,280</b>	<b>56%</b>	<b>1,084,893</b>	<b>61%</b>	<b>78,614</b>

**Figure: Vegetation Type Protection Statistics, by Select Landscape Unit:**

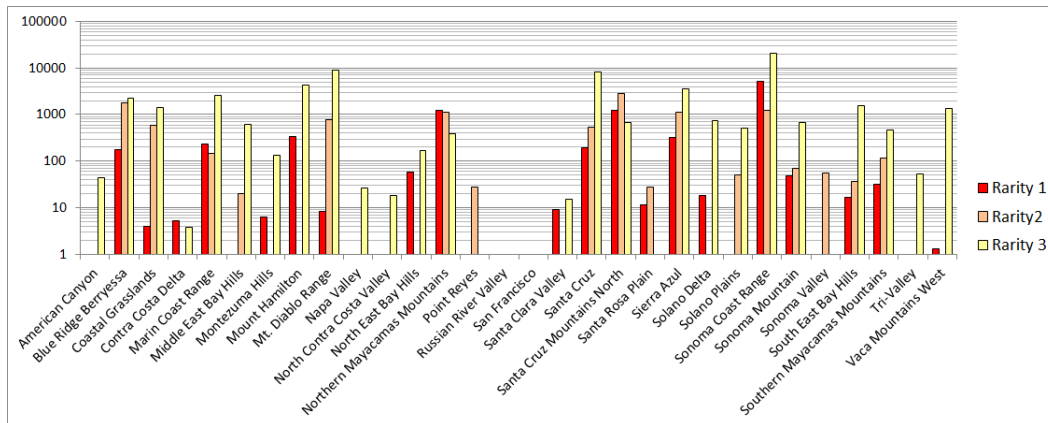
- Santa Cruz Mountains North: 865 acres additional Cool grasslands, 303 acres of Central Coast Riparian Forest in various POST, Mid-Pen projects.
- Santa Cruz: 179 acres of Sand Hills Quail Hollow, revised in BPAD, New?
- Marin Coast Range 167 acres Douglas-fir Forest 804 acres Montane Hardwoods,
- Northern Mayacamas: 375 ac Black-oak Forest-Woodland,404 acres Canyon Live-oak Forest
- Sonoma Coast Range: 4,133 Tan Oak Forest, 373 McNab Cypress, 182 Serpentine barren, 163 Cool Grasslands, 121 Bishop Pine Forest
- Sonoma Mountain: 22 acres Redwood Forest
- Southern Mayacamas: 24 acres Redwood Forest
- Mt. Diablo: 70 acres Blue-Oak-Foothill Pine Woodland
- Blue-Ridge Berryessa: 267 acres Blue-Oak-Foothill Pine Woodland

**Figure 4.4: Additional protected acreage of rare landscapes, by landscape unit**

Since 2010, 78,574 acres of rare landscapes have been protected throughout the 10-County Bay Area. These landscapes were protected in all 29 landscape units across the region except for one—San Francisco. (Note: Negative gains are actually discrepancies from the BPAD 2010 data, where lands were denoted protected, but actually were not. These errors have been corrected in the subsequent BPAD updates (2011, 2012, 2013). In real life, lands have not moved out of protection. But in the data, it appears that they have.)

Landscape Unit	Rarity 1	Rarity2	Rarity 3	Total 1-3
American Canyon	0	0	43	43
Blue Ridge Berryessa	176	1767	2298	4241
Coastal Grasslands	4	587	1416	2006
Contra Costa Delta	5	0	4	9
Marin Coast Range	232	147	2547	2925
Middle East Bay Hills	-10	20	607	618
Montezuma Hills	6	0	133	139
Mount Hamilton	368	0	4227	4595
Mt. Diablo Range	8	774	9131	9914
Napa Valley	0	0	26	26
North Contra Costa Valley	0	0	18	18
North East Bay Hills	58	0	171	229
Northern Mayacamas Mountains	1241	1116	386	2743
Point Reyes	0	28	0	28
Russian River Valley	0	0	0	0
San Francisco	0	0	0	0
Santa Clara Valley	9	0	15	24
Santa Cruz	195	532	8082	8809
Santa Cruz Mountains North	1218	2869	662	4749
Santa Rosa Plain	12	28		40
Sierra Azul	327	1142	3498	4967

Solano Delta	19	0	737	756
Solano Plains	0	51	502	552
Sonoma Coast Range	5090	1214	20613	26917
Sonoma Mountain	49	70	689	808
Sonoma Valley	0	55	0	55
South East Bay Hills	17	37	1540	1593
Southern Mayacamas Mountains	32	117	469	619
Tri-Valley	0	0	53	53
Vaca Mountains West	1	-38	1341	1305
<b>Grand Total</b>	<b>8982</b>	<b>10428</b>	<b>59164</b>	<b>78574</b>



## Protection progress by Iconic Vegetation Types

Figure: Redwood Forest

Landscape Unit	2010 Acres	2013 Acres	Change	LU Goal
Sonoma Coast Range	10,966	18,264	7,297	41,757
Santa Cruz	29,260	35,527	6,267	
Santa Cruz Mountains North	31,199	32,203	1,004	33,929
Sierra Azul	16,920	17,363	443	4,818
Marin Coast Range	3,760	3,818	57	4,412
Southern Mayacamas	846	870	24	4,113
Sonoma Mountain	527	549	22	706
Middle East Bay Hills	1,337	1,347	11	1,313

Figure: Douglas Fir Forest

Landscape Unit	2010 Acres	2013 Acres	Change	LU Goal
Sonoma Coast Range	12,215	20,134	7,919	34,776
Santa Cruz	4,872	5,376	503	
Santa Cruz Mountains North	12,261	12,467	205	9,330
Marin Coast Range	13,049	13,216	167	8,427
Sonoma Mountain	1,541	1,603	62	1,776
Point Reyes	13,833	13,882	50	8,209
Sierra Azul	779	824	46	1,828
Sonoma Valley	1	26	25	60

**Figure: Blue Oak Forest / Woodland**

Landscape Unit	2010 Acres	2013 Acres	Change	LU Goal
Mt. Diablo Range	13,724	14,894	1,170	12,573
Blue Ridge Berryessa	15,664	16,660	996	29,963
Vaca Mountains West	1,809	2,236	427	5,584
Mount Hamilton	35,387	35,570	183	43,507
Solano Plains	0	51	51	435
Sierra Azul	1,296	1,340	44	4,143
North East Bay Hills	1,220	1,255	35	2,456

Mt. Diablo: 70 acres Blue-Oak-Foothill Pine Woodland  
 Blue-Ridge Berryessa: 267 acres Blue-Oak-Foothill Pine Woodland  
 Northern Mayacamas: 404 acres Canyon Live-oak Forest

**Figure: Coast Live Oak Forest / Woodland**

Landscape Unit	2010 Acres	2013 Acres	Change	LU Goal
Mount Hamilton	36,320	38,475	2,155	68,859
Santa Cruz	3,509	4,820	1,312	
Sierra Azul	8,867	10,077	1,211	21,946
South East Bay Hills	6,521	7,256	734	1,522

Santa Cruz Mountains North	10,592	10,749	158	17,041
Middle East Bay Hills	8,784	8,914	130	16,871
Northern Mayacamas	67	135	68	2,039
North East Bay Hills	9,904	9,966	62	13,573
Marin Coast Range	3,251	3,295	44	7,306
Sonoma Coast Range	1,851	1,888	37	3,851
Mt. Diablo Range	1,583	1,616	33	1,422

**Figure: Montane Hardwoods**

Landscape Unit	2010 Acres	2013 Acres	Change	Acres Goal
Sonoma Coast Range	16,842	21,159	4,317	37,298
Marin Coast Range	17,197	18,062	865	16,303
Northern Mayacamas	3,690	4,493	804	20,364
Sierra Azul	1,226	1,688	462	5,025
Sonoma Mountain	685	958	272	7,172
Southern Mayacamas	9,878	10,112	234	26,667
Mount Hamilton	20,552	20,683	131	23,736
Vaca Mountains West	9,575	9,676	101	27,150
Blue Ridge Berryessa	2,423	2,509	87	5,550
Sonoma Valley	150	171	22	395
Russian River Valley	1,026	1,043	17	2,429
Santa Rosa Plain	244	255	11	634

**Figure: Vegetation Types (Habitats and Rare Landscapes), by County**

<b>County/Vegetation Type</b>	<b>ACRES</b>
<b>Alameda</b>	<b>470,822</b>
Barren/Rock	33
Blue Oak- Foothill Pine Woodland	1,437
Blue Oak Forest / Woodland	27,364
California Bay Forest	1,645
Canyon Live Oak Forest	9
Central Coast Riparian Forests	1,177
Chamise Chaparral	2,045
Coast Live Oak Forest / Woodland	35,411
Coastal Salt Marsh / Coastal Brackish Marsh	4,810
Coastal Scrub	2,066
Cool Grasslands	440
Cultivated	12,748
Eucalyptus	755
Hot Grasslands	28,359
Mixed Chaparral	117
Mixed Montane Chaparral	2,904
Moderate Grasslands	19,963
Montane Hardwoods	14,248
Monterey Pine Forest	713
Non-Native Ornamental Conifer-Hardwood Mixture	82
Non-Native/Ornamental Conifer	88
Non-native/Ornamental Grass	48
Non-native/Ornamental Hardwood	14
Permanent Freshwater Marsh	2,153
Redwood Forest	564
Rural Residential	8,074
Semi-Desert Scrub / Desert Scrub	12,069
Serpentine Conifer	71
Serpentine Grassland	1,605
Serpentine Hardwoods	2,480
Serpentine Leather-Oak Chaparral	2,158
Serpentine Riparian	16
Serpentine Scrub	109
Sycamore Alluvial Woodland	67
Urban	149,096
Valley Oak Forest / Woodland	1,025
Warm Grasslands	112,920
Water	21,939
<b>Contra Costa</b>	<b>480,617</b>
Barren/Rock	268
Black Oak Forest / Woodland	27

Blue Oak- Foothill Pine Woodland	1,180
Blue Oak Forest / Woodland	27,241
California Bay Forest	1,367
Canyon Live Oak Forest	44
Central Coast Riparian Forests	432
Chamise Chaparral	5,538
Coast Live Oak Forest / Woodland	24,549
Coastal Salt Marsh / Coastal Brackish Marsh	6,930
Coastal Scrub	2,434
Cool Grasslands	187
Coulter Pine Forest	68
Cultivated	69,944
Eucalyptus	1,284
Hot Grasslands	45,185
Interior Live Oak Forest / Woodland	2,373
Juniper Woodland and Scrub	197
Knobcone Pine Forest	80
Mixed Chaparral	12
Mixed Montane Chaparral	1,959
Moderate Grasslands	7,853
Montane Hardwoods	204
Monterey Pine Forest	806
Non-Native Ornamental Conifer-Hardwood Mixture	65
Non-Native/Ornamental Conifer	20
Non-native/Ornamental Grass	86
Non-native/Ornamental Hardwood	34
Permanent Freshwater Marsh	693
Redwood Forest	823
Rural Residential	13,030
Semi-Desert Scrub / Desert Scrub	4,380
Serpentine Conifer	53
Serpentine Grassland	191
Serpentine Hardwoods	150
Serpentine Leather-Oak Chaparral	272
Serpentine Scrub	25
Urban	156,401
Valley Oak Forest / Woodland	341
Warm Grasslands	93,596
Water	10,295
<b>Marin</b>	<b>334,363</b>
Barren/Rock	600
Bishop Pine Forest	3,473
Blue Oak Forest / Woodland	154



Conservation Lands Network 1.0 Progress Report  
Appendix: Habitat and Biodiversity

California Bay Forest	19,778
Central Coast Riparian Forests	2,507
Chamise Chaparral	79
Coast Live Oak Forest / Woodland	5,923
Coastal Salt Marsh / Coastal Brackish Marsh	4,216
Coastal Scrub	31,368
Cool Grasslands	36,185
Cultivated	9,942
Douglas Fir Forest	31,672
Dune	624
Eucalyptus	1,184
Mcnab Cypress	732
Mixed Montane Chaparral	3,419
Moderate Grasslands	61,489
Montane Hardwoods	33,811
Monterey Cypress Forest	42
Monterey Pine Forest	111
Native Grassland	81
Non-Native Ornamental Conifer-Hardwood Mixture	543
Non-Native/Ornamental Conifer	61
Non-native/Ornamental Grass	172
Non-Native/Ornamental Shrub	109
Oregon Oak Woodland	763
Permanent Freshwater Marsh	41
Redwood Forest	4,226
Rural Residential	6,562
Semi-Desert Scrub / Desert Scrub	69
Serpentine Barren	17
Serpentine Conifer	618
Serpentine Grassland	1,291
Serpentine Hardwoods	462
Serpentine Leather-Oak Chaparral	389
Serpentine Scrub	124
Urban	43,500
Valley Oak Forest / Woodland	74
Warm Grasslands	23,347
Water	4,586
Wet Meadows	21
<b>Napa</b>	<b>505,308</b>
Barren/Rock	2,643
Black Oak Forest / Woodland	981
Blue Oak- Foothill Pine Woodland	11,834
Blue Oak Forest / Woodland	54,814

California Bay Forest	91
Canyon Live Oak Forest	779
Central Coast Riparian Forests	469
Chamise Chaparral	14,352
Coast Live Oak Forest / Woodland	4,423
Coastal Salt Marsh / Coastal Brackish Marsh	1,670
Coastal Scrub	133
Cultivated	70,164
Douglas Fir Forest	12,156
Eucalyptus	22
Hot Grasslands	34,679
Interior Live Oak Forest / Woodland	4,625
Knobcone Pine Forest	2,443
Mcnab Cypress	3,864
Mixed Chaparral	5,829
Mixed Conifer-Pine	218
Mixed Montane Chaparral	65,269
Moderate Grasslands	2,066
Montane Hardwoods	77,415
Non-Native Ornamental Conifer-Hardwood Mixture	58
Non-native/Ornamental Grass	56
Non-Native/Ornamental Shrub	4
Oregon Oak Woodland	1,109
Permanent Freshwater Marsh	2,114
Ponderosa Pine Forest (Non-Maritime)	7,516
Redwood Forest	2,993
Rural Residential	9,399
Sargent Cypress Forest / Woodland	1,936
Semi-Desert Scrub / Desert Scrub	22
Serpentine Barren	229
Serpentine Conifer	2,837
Serpentine Grassland	1,751
Serpentine Hardwoods	4,135
Serpentine Knobcone	29
Serpentine Leather-Oak Chaparral	30,176
Serpentine Riparian	4
Tanoak Forest	12
Urban	24,003
Valley Oak Forest / Woodland	758
Warm Grasslands	17,660
Water	27,564
Wet Meadows	5
<b>San Francisco</b>	<b>29,527</b>

Barren/Rock	99
Blue Oak Forest / Woodland	147
California Bay Forest	65
Chamise Chaparral	16
Coast Live Oak Forest / Woodland	311
Coastal Salt Marsh / Coastal Brackish Marsh	24
Coastal Scrub	27
Cool Grasslands	250
Dune	10
Eucalyptus	7
Montane Hardwoods	4
Non-Native Ornamental Conifer-Hardwood Mixture	957
Non-native/Ornamental Grass	506
Non-native/Ornamental Hardwood	163
Semi-Desert Scrub / Desert Scrub	8
Serpentine Grassland	1
Serpentine Hardwoods	75
Serpentine Scrub	25
Urban	26,270
Valley Oak Forest / Woodland	230
Water	332
<b>San Mateo</b>	<b>289,558</b>
Barren/Rock	668
Blue Oak Forest / Woodland	231
California Bay Forest	1,236
Central Coast Riparian Forests	2,378
Chamise Chaparral	12,713
Coast Live Oak Forest / Woodland	11,132
Coastal Salt Marsh / Coastal Brackish Marsh	3,461
Coastal Scrub	44,752
Cool Grasslands	22,508
Cultivated	5,661
Douglas Fir Forest	15,075
Dune	34
Eucalyptus	2,976
Knobcone Pine Forest	435
Mixed Montane Chaparral	0
Moderate Grasslands	8,729
Montane Hardwoods	1
Monterey Cypress Forest	6
Monterey Pine Forest	181
Non-Native Ornamental Conifer-Hardwood Mixture	1,206

Non-Native/Ornamental Conifer	97
Non-native/Ornamental Grass	21
Non-native/Ornamental Hardwood	2
Permanent Freshwater Marsh	365
Redwood Forest	54,584
Rural Residential	11,685
Semi-Desert Scrub / Desert Scrub	2,576
Serpentine Grassland	673
Serpentine Hardwoods	147
Serpentine Leather-Oak Chaparral	13
Serpentine Riparian	6
Serpentine Scrub	133
Tanoak Forest	33
Urban	74,440
Valley Oak Forest / Woodland	798
Warm Grasslands	4,154
Water	6,440
Wet Meadows	7
<b>Santa Clara</b>	<b>829,827</b>
Barren/Rock	991
Black Oak Forest / Woodland	46
Blue Oak- Foothill Pine Woodland	13,065
Blue Oak Forest / Woodland	65,239
California Bay Forest	17,685
Canyon Live Oak Forest	110
Central Coast Riparian Forests	2,330
Chamise Chaparral	51,569
Coast Live Oak Forest / Woodland	112,017
Coastal Salt Marsh / Coastal Brackish Marsh	1,909
Coastal Scrub	5,605
Coastal Terrace Prairie	100
Coulter Pine Forest	198
Cultivated	39,188
Douglas Fir Forest	9,720
Eucalyptus	29
Hot Grasslands	28,662
Knobcone Pine Forest	7
Mixed Chaparral	527
Mixed Montane Chaparral	34,666
Moderate Grasslands	17,099
Montane Hardwoods	43,551
Non-Native Ornamental Conifer-Hardwood Mixture	73
Non-Native/Ornamental Conifer	11

Non-native/Ornamental Grass	77
Non-native/Ornamental Hardwood	12
Permanent Freshwater Marsh	471
Ponderosa Pine Forest (Non-Maritime)	957
Redwood Forest	12,601
Rural Residential	19,699
Semi-Desert Scrub / Desert Scrub	26,504
Serpentine Barren	38
Serpentine Conifer	199
Serpentine Grassland	8,610
Serpentine Hardwoods	4,662
Serpentine Leather-Oak Chaparral	1,569
Serpentine Riparian	76
Serpentine Scrub	604
Sycamore Alluvial Woodland	29
Urban	192,689
Valley Oak Forest / Woodland	2,443
Warm Grasslands	101,278
Water	12,912
<b>Santa Cruz</b>	<b>285,150</b>
Barren/Rock	558
Central Coast Riparian Forests	1,608
Chamise Chaparral	2,052
Coast Live Oak Forest / Woodland	25,853
Coastal Scrub	13,145
Cool Grasslands	4,398
Cultivated	26,998
Douglas Fir Forest	7,354
Dune	296
Eucalyptus	1,467
Knobcone Pine Forest	6,140
Mixed Montane Chaparral	8,113
Moderate Grasslands	5,974
Monterey Pine Forest	704
Non-Native Ornamental Conifer-Hardwood Mixture	1,082
Non-native/Ornamental Grass	97
Non-Native/Ornamental Shrub	15
Permanent Freshwater Marsh	207
Redwood Forest	135,454
Rural Residential	0
Sandhills	5,892
Santa Cruz Cypress	209
Semi-Desert Scrub / Desert Scrub	2

Urban	32,116
Warm Grasslands	4,745
Water	671
<b>Solano</b>	<b>541,564</b>
Barren/Rock	1,430
Black Oak Forest / Woodland	39
Blue Oak- Foothill Pine Woodland	1,723
Blue Oak Forest / Woodland	15,926
Central Coast Riparian Forests	441
Chamise Chaparral	1,752
Coast Live Oak Forest / Woodland	1,814
Coastal Salt Marsh / Coastal Brackish Marsh	49,998
Coastal Scrub	37
Coastal Terrace Prairie	858
Cultivated	191,953
Eucalyptus	102
Hot Grasslands	114,169
Interior Live Oak Forest / Woodland	758
Mixed Chaparral	5,816
Mixed Montane Chaparral	7,546
Moderate Grasslands	138
Montane Hardwoods	5,504
Native Grassland	527
Non-Native Ornamental Conifer-Hardwood Mixture	17
Non-native/Ornamental Grass	34
Permanent Freshwater Marsh	5,539
Rural Residential	5
Semi-Desert Scrub / Desert Scrub	262
Serpentine Grassland	54
Serpentine Riparian	4
Urban	65,835
Valley Oak Forest / Woodland	835
Warm Grasslands	54,670
Water	13,781
<b>Sonoma</b>	<b>1,015,041</b>
Barren/Rock	6,062
Bishop Pine Forest	3,799
Black Oak Forest / Woodland	3,097
Blue Oak- Foothill Pine Woodland	3,268
Blue Oak Forest / Woodland	351
California Bay Forest	7,121
Canyon Live Oak Forest	6,206
Central Coast Riparian Forests	4,290

Conservation Lands Network 1.0 Progress Report  
Appendix: Habitat and Biodiversity

Chamise Chaparral	3,705
Coast Live Oak Forest / Woodland	17,846
Coastal Salt Marsh / Coastal Brackish Marsh	5,092
Coastal Scrub	3,895
Cool Grasslands	13,701
Cultivated	138,195
Douglas Fir Forest	94,520
Dune	101
Eucalyptus	1,072
Grand Fir	215
Hot Grasslands	18,894
Interior Live Oak Forest / Woodland	1,167
Knobcone Pine Forest	3,790
Mcnab Cypress	5,082
Mixed Chaparral	2,835
Mixed Conifer-Pine	209
Mixed Montane Chaparral	29,523
Moderate Grasslands	39,038
Montane Hardwoods	152,800
Monterey Cypress Forest	43
Monterey Pine Forest	149
Native Grassland	766
Non-Native Ornamental Conifer-Hardwood Mixture	15
Non-Native/Ornamental Conifer	22
Non-native/Ornamental Grass	73
Non-native/Ornamental Hardwood	17
Non-Native/Ornamental Shrub	167
Oregon Oak Woodland	35,997
Permanent Freshwater Marsh	1,184
Ponderosa Pine Forest (Non-Maritime)	3,039
Pygmy Cypress	106
Redwood Forest	96,637
Rural Residential	60,601
Sargent Cypress Forest / Woodland	1,019
Semi-Desert Scrub / Desert Scrub	21
Serpentine Barren	887
Serpentine Conifer	4,320
Serpentine Grassland	2,786
Serpentine Hardwoods	4,757
Serpentine Knobcone	427
Serpentine Leather-Oak Chaparral	4,803
Serpentine Riparian	30
Serpentine Scrub	7

Conservation Lands Network 1.0 Progress Report  
Appendix: Habitat and Biodiversity

Tanoak Forest	28,020
Urban	77,871
Valley Oak Forest / Woodland	354
Warm Grasslands	116,765
Water	8,113
Wet Meadows	172
<b>Grand Total</b>	<b>4,781,777</b>



**Figure: Acreage of vegetation types (habitats and rare landscapes), by landscape unit**

<b>VEGETATION BY LANDSCAPE UNIT</b>	
<b>Row Labels</b>	<b>Sum of ACRES</b>
<b>Alameda Urban</b>	<b>76,536</b>
Central Coast Riparian Forests	9
Coast Live Oak Forest / Woodland	37
Coastal Salt Marsh / Coastal Brackish Marsh	208
Coastal Scrub	12
Cool Grasslands	1
Cultivated	700
Eucalyptus	85
Moderate Grasslands	2,063
Non-Native Ornamental Conifer-Hardwood Mixture	5
Non-native/Ornamental Grass	1
Permanent Freshwater Marsh	424
Redwood Forest	1
Rural Residential	327
Serpentine Conifer	6
Serpentine Grassland	3
Serpentine Hardwoods	0
Urban	71,463
Valley Oak Forest / Woodland	40
Water	1,150
<b>American Canyon</b>	<b>55,389</b>
Barren/Rock	195
Blue Oak Forest / Woodland	109
Central Coast Riparian Forests	5
Coast Live Oak Forest / Woodland	53
Coastal Salt Marsh / Coastal Brackish Marsh	70
Coastal Scrub	4
Coastal Terrace Prairie	766
Cultivated	2,952
Moderate Grasslands	1,282
Montane Hardwoods	1,102
Non-native/Ornamental Grass	11
Permanent Freshwater Marsh	36
Rural Residential	584
Serpentine Grassland	73
Urban	22,295
Valley Oak Forest / Woodland	58
Warm Grasslands	25,607
Water	187

<b>Blue Ridge Berryessa</b>	<b>275,905</b>
Barren/Rock	150
Blue Oak- Foothill Pine Woodland	9,578
Blue Oak Forest / Woodland	59,428
Central Coast Riparian Forests	112
Chamise Chaparral	11,182
Coast Live Oak Forest / Woodland	1,082
Cultivated	15,719
Hot Grasslands	42,917
Interior Live Oak Forest / Woodland	4,496
Mcnab Cypress	3,780
Mixed Chaparral	6,363
Mixed Montane Chaparral	48,362
Montane Hardwoods	7,399
Native Grassland	2
Non-Native Ornamental Conifer-Hardwood Mixture	5
Non-native/Ornamental Grass	5
Permanent Freshwater Marsh	40
Ponderosa Pine Forest (Non-Maritime)	33
Rural Residential	814
Sargent Cypress Forest / Woodland	1,932
Semi-Desert Scrub / Desert Scrub	223
Serpentine Barren	229
Serpentine Conifer	1,225
Serpentine Grassland	1,447
Serpentine Hardwoods	1,228
Serpentine Knobcone	9
Serpentine Leather-Oak Chaparral	26,256
Urban	10,289
Valley Oak Forest / Woodland	1,013
Warm Grasslands	770
Water	19,817
<b>Coastal Grasslands</b>	<b>149,263</b>
Barren/Rock	189
Bishop Pine Forest	10
California Bay Forest	493
Central Coast Riparian Forests	769
Chamise Chaparral	26
Coast Live Oak Forest / Woodland	1,208
Coastal Salt Marsh / Coastal Brackish Marsh	200
Coastal Scrub	3,581
Cool Grasslands	17,566
Cultivated	24,220

Douglas Fir Forest	941
Dune	350
Eucalyptus	978
Moderate Grasslands	33,446
Montane Hardwoods	1,368
Monterey Cypress Forest	66
Monterey Pine Forest	23
Native Grassland	844
Non-Native Ornamental Conifer-Hardwood Mixture	1
Non-Native/Ornamental Conifer	20
Non-native/Ornamental Grass	16
Non-native/Ornamental Hardwood	13
Non-Native/Ornamental Shrub	183
Oregon Oak Woodland	128
Redwood Forest	361
Rural Residential	15,114
Serpentine Grassland	74
Serpentine Hardwoods	5
Tanoak Forest	19
Urban	17,242
Valley Oak Forest / Woodland	73
Warm Grasslands	28,648
Water	938
Wet Meadows	151
<b>Contra Costa Delta</b>	<b>96,577</b>
Central Coast Riparian Forests	82
Coastal Salt Marsh / Coastal Brackish Marsh	235
Cultivated	64,338
Hot Grasslands	3,066
Permanent Freshwater Marsh	417
Rural Residential	3,911
Urban	18,118
Water	6,411
<b>Contra Costa Urban</b>	<b>8,837</b>
Coastal Salt Marsh / Coastal Brackish Marsh	21
Cool Grasslands	10
Cultivated	114
Eucalyptus	179
Moderate Grasslands	337
Non-native/Ornamental Hardwood	0
Permanent Freshwater Marsh	1
Rural Residential	15
Urban	8,145

Water	14
<b>Marin Coast Range</b>	<b>220,551</b>
Barren/Rock	266
Bishop Pine Forest	77
Blue Oak Forest / Woodland	82
California Bay Forest	18,650
Central Coast Riparian Forests	1,463
Chamise Chaparral	79
Coast Live Oak Forest / Woodland	5,199
Coastal Salt Marsh / Coastal Brackish Marsh	104
Coastal Scrub	12,768
Cool Grasslands	9,504
Cultivated	4,194
Douglas Fir Forest	15,691
Dune	40
Eucalyptus	668
Mcnab Cypress	732
Mixed Montane Chaparral	3,419
Moderate Grasslands	42,975
Montane Hardwoods	32,607
Monterey Cypress Forest	6
Monterey Pine Forest	14
Non-Native Ornamental Conifer-Hardwood Mixture	525
Non-Native/Ornamental Conifer	60
Non-native/Ornamental Grass	68
Non-Native/Ornamental Shrub	67
Oregon Oak Woodland	759
Permanent Freshwater Marsh	16
Redwood Forest	4,224
Rural Residential	4,522
Semi-Desert Scrub / Desert Scrub	68
Serpentine Barren	17
Serpentine Conifer	618
Serpentine Grassland	1,329
Serpentine Hardwoods	462
Serpentine Leather-Oak Chaparral	389
Serpentine Scrub	124
Urban	33,667
Valley Oak Forest / Woodland	99
Warm Grasslands	22,435
Water	2,560
Wet Meadows	7
<b>Middle East Bay Hills</b>	<b>86,577</b>

Barren/Rock	1
Blue Oak Forest / Woodland	789
California Bay Forest	350
Central Coast Riparian Forests	59
Chamise Chaparral	937
Coast Live Oak Forest / Woodland	17,679
Coastal Scrub	1,684
Cool Grasslands	2
Cultivated	110
Eucalyptus	345
Knobcone Pine Forest	78
Moderate Grasslands	7,657
Montane Hardwoods	15
Monterey Pine Forest	713
Non-Native Ornamental Conifer-Hardwood Mixture	106
Non-Native/Ornamental Conifer	80
Non-native/Ornamental Grass	12
Redwood Forest	1,377
Rural Residential	2,880
Semi-Desert Scrub / Desert Scrub	4,674
Serpentine Conifer	45
Serpentine Grassland	221
Serpentine Hardwoods	310
Serpentine Leather-Oak Chaparral	5
Serpentine Scrub	34
Urban	29,817
Warm Grasslands	15,451
Water	1,145
<b>Montezuma Hills</b>	<b>55,284</b>
Barren/Rock	208
Central Coast Riparian Forests	42
Coastal Salt Marsh / Coastal Brackish Marsh	581
Cultivated	2,252
Eucalyptus	4
Hot Grasslands	34,998
Native Grassland	19
Permanent Freshwater Marsh	135
Urban	1,703
Warm Grasslands	13,493
Water	1,848
<b>Mount Hamilton</b>	<b>606,389</b>
Barren/Rock	347
Black Oak Forest / Woodland	46

Blue Oak- Foothill Pine Woodland	14,495
Blue Oak Forest / Woodland	86,780
California Bay Forest	5,086
Canyon Live Oak Forest	119
Central Coast Riparian Forests	1,863
Chamise Chaparral	33,575
Coast Live Oak Forest / Woodland	91,127
Coastal Scrub	3,255
Coulter Pine Forest	198
Cultivated	7,060
Eucalyptus	6
Hot Grasslands	45,843
Mixed Chaparral	606
Mixed Montane Chaparral	34,723
Moderate Grasslands	23,077
Montane Hardwoods	47,471
Non-Native Ornamental Conifer-Hardwood Mixture	6
Non-Native/Ornamental Conifer	8
Non-native/Ornamental Grass	44
Ponderosa Pine Forest (Non-Maritime)	957
Rural Residential	5,905
Semi-Desert Scrub / Desert Scrub	24,655
Serpentine Barren	15
Serpentine Conifer	172
Serpentine Grassland	7,075
Serpentine Hardwoods	4,415
Serpentine Leather-Oak Chaparral	3,000
Serpentine Riparian	77
Serpentine Scrub	535
Sycamore Alluvial Woodland	68
Urban	17,613
Valley Oak Forest / Woodland	2,984
Warm Grasslands	138,278
Water	4,905
<b>Mt. Diablo Range</b>	<b>238,252</b>
Barren/Rock	270
Blue Oak- Foothill Pine Woodland	1,170
Blue Oak Forest / Woodland	23,989
Canyon Live Oak Forest	44
Central Coast Riparian Forests	279
Chamise Chaparral	4,653
Coast Live Oak Forest / Woodland	1,660
Coastal Salt Marsh / Coastal Brackish Marsh	113

Coastal Scrub	492
Coulter Pine Forest	68
Cultivated	5,492
Eucalyptus	50
Hot Grasslands	52,559
Interior Live Oak Forest / Woodland	2,373
Juniper Woodland and Scrub	197
Knobcone Pine Forest	2
Mixed Chaparral	12
Mixed Montane Chaparral	1,959
Montane Hardwoods	177
Non-Native Ornamental Conifer-Hardwood Mixture	1
Non-native/Ornamental Grass	45
Non-native/Ornamental Hardwood	13
Permanent Freshwater Marsh	22
Rural Residential	5,636
Semi-Desert Scrub / Desert Scrub	980
Serpentine Conifer	53
Serpentine Grassland	191
Serpentine Hardwoods	138
Serpentine Leather-Oak Chaparral	272
Serpentine Scrub	25
Urban	46,958
Valley Oak Forest / Woodland	174
Warm Grasslands	86,282
Water	1,904
<b>Napa Valley</b>	<b>39,075</b>
Barren/Rock	2
Blue Oak- Foothill Pine Woodland	0
Blue Oak Forest / Woodland	14
California Bay Forest	1
Central Coast Riparian Forests	302
Coast Live Oak Forest / Woodland	133
Cultivated	25,070
Douglas Fir Forest	65
Hot Grasslands	233
Interior Live Oak Forest / Woodland	3
Mixed Montane Chaparral	16
Montane Hardwoods	478
Non-Native Ornamental Conifer-Hardwood Mixture	2
Non-native/Ornamental Grass	0
Oregon Oak Woodland	47

Permanent Freshwater Marsh	2
Redwood Forest	0
Rural Residential	1,024
Semi-Desert Scrub / Desert Scrub	2
Urban	11,069
Valley Oak Forest / Woodland	43
Warm Grasslands	517
Water	49
Wet Meadows	1
<b>North Contra Costa Valley</b>	<b>27,701</b>
Blue Oak Forest / Woodland	10
Coast Live Oak Forest / Woodland	28
Coastal Salt Marsh / Coastal Brackish Marsh	10
Cultivated	54
Non-native/Ornamental Grass	1
Permanent Freshwater Marsh	18
Rural Residential	62
Urban	24,251
Warm Grasslands	3,060
Water	207
<b>North East Bay Hills</b>	<b>86,069</b>
Black Oak Forest / Woodland	27
Blue Oak- Foothill Pine Woodland	10
Blue Oak Forest / Woodland	2,485
California Bay Forest	1,266
Central Coast Riparian Forests	108
Chamise Chaparral	92
Coast Live Oak Forest / Woodland	13,983
Coastal Salt Marsh / Coastal Brackish Marsh	1
Coastal Scrub	1,827
Cultivated	230
Eucalyptus	1,259
Moderate Grasslands	4,445
Monterey Pine Forest	806
Non-Native Ornamental Conifer-Hardwood Mixture	3
Non-Native/Ornamental Conifer	20
Non-native/Ornamental Grass	13
Non-native/Ornamental Hardwood	0
Redwood Forest	8
Rural Residential	2,159
Semi-Desert Scrub / Desert Scrub	2,236
Serpentine Hardwoods	12
Urban	34,343



Valley Oak Forest / Woodland	167
Warm Grasslands	19,073
Water	1,495
<b>Northern Mayacamas Mountains</b>	<b>109,880</b>
Barren/Rock	450
Bishop Pine Forest	124
Black Oak Forest / Woodland	2,569
Blue Oak- Foothill Pine Woodland	2,779
Blue Oak Forest / Woodland	63
California Bay Forest	659
Canyon Live Oak Forest	5,347
Central Coast Riparian Forests	24
Chamise Chaparral	931
Coast Live Oak Forest / Woodland	2,620
Cultivated	7,314
Douglas Fir Forest	7,843
Hot Grasslands	8,458
Knobcone Pine Forest	2,030
Mixed Chaparral	922
Mixed Conifer-Pine	209
Mixed Montane Chaparral	15,623
Moderate Grasslands	239
Montane Hardwoods	22,626
Oregon Oak Woodland	7,654
Ponderosa Pine Forest (Non-Maritime)	1,921
Redwood Forest	115
Rural Residential	1,029
Sargent Cypress Forest / Woodland	5
Serpentine Barren	39
Serpentine Conifer	1,469
Serpentine Grassland	494
Serpentine Hardwoods	1,332
Serpentine Knobcone	307
Serpentine Leather-Oak Chaparral	2,648
Serpentine Riparian	17
Tanoak Forest	825
Urban	449
Valley Oak Forest / Woodland	7
Warm Grasslands	10,609
Water	130
<b>Point Reyes</b>	<b>62,786</b>
Barren/Rock	163
Bishop Pine Forest	3,342
California Bay Forest	963

Central Coast Riparian Forests	946
Coast Live Oak Forest / Woodland	288
Coastal Salt Marsh / Coastal Brackish Marsh	107
Coastal Scrub	17,648
Cool Grasslands	17,336
Cultivated	687
Douglas Fir Forest	15,981
Dune	334
Eucalyptus	198
Moderate Grasslands	268
Montane Hardwoods	1,093
Monterey Pine Forest	74
Non-Native Ornamental Conifer-Hardwood Mixture	14
Permanent Freshwater Marsh	11
Rural Residential	1,554
Urban	1,166
Water	611
<b>Russian River Valley</b>	<b>55,252</b>
Barren/Rock	1,148
Blue Oak- Foothill Pine Woodland	39
Blue Oak Forest / Woodland	101
California Bay Forest	15
Canyon Live Oak Forest	3
Central Coast Riparian Forests	1,533
Coast Live Oak Forest / Woodland	3,086
Coastal Scrub	9
Cultivated	24,851
Douglas Fir Forest	1,947
Eucalyptus	2
Hot Grasslands	436
Mixed Chaparral	39
Mixed Montane Chaparral	26
Montane Hardwoods	4,858
Oregon Oak Woodland	2,016
Ponderosa Pine Forest (Non-Maritime)	0
Redwood Forest	159
Rural Residential	3,094
Serpentine Barren	11
Serpentine Grassland	565
Serpentine Hardwoods	402
Serpentine Riparian	13
Tanoak Forest	5
Urban	6,030

Valley Oak Forest / Woodland	33
Warm Grasslands	3,731
Water	1,100
<b>San Francisco</b>	<b>34,393</b>
Barren/Rock	176
Blue Oak Forest / Woodland	168
California Bay Forest	71
Chamise Chaparral	359
Coast Live Oak Forest / Woodland	344
Coastal Salt Marsh / Coastal Brackish Marsh	24
Coastal Scrub	835
Cool Grasslands	1,545
Cultivated	35
Dune	9
Eucalyptus	112
Montane Hardwoods	4
Non-Native Ornamental Conifer-Hardwood Mixture	993
Non-native/Ornamental Grass	498
Non-native/Ornamental Hardwood	163
Rural Residential	383
Semi-Desert Scrub / Desert Scrub	8
Serpentine Grassland	1
Serpentine Hardwoods	72
Serpentine Scrub	25
Urban	28,032
Valley Oak Forest / Woodland	230
Water	307
<b>San Mateo Urban</b>	<b>23,678</b>
Coastal Salt Marsh / Coastal Brackish Marsh	37
Cool Grasslands	10
Moderate Grasslands	35
Permanent Freshwater Marsh	3
Rural Residential	3
Urban	23,589
Water	0
<b>Santa Clara Urban</b>	<b>150,666</b>
Barren/Rock	4
Blue Oak Forest / Woodland	14
California Bay Forest	4
Central Coast Riparian Forests	281
Chamise Chaparral	6
Coast Live Oak Forest / Woodland	27
Coastal Salt Marsh / Coastal Brackish Marsh	0

Cultivated	1,303
Mixed Montane Chaparral	10
Moderate Grasslands	193
Montane Hardwoods	28
Non-Native Ornamental Conifer-Hardwood Mixture	1
Non-native/Ornamental Grass	13
Permanent Freshwater Marsh	30
Rural Residential	683
Semi-Desert Scrub / Desert Scrub	12
Serpentine Barren	22
Serpentine Grassland	317
Serpentine Hardwoods	4
Serpentine Riparian	0
Urban	145,836
Valley Oak Forest / Woodland	24
Warm Grasslands	1,707
Water	147
<b>Santa Clara Valley</b>	<b>48,627</b>
Central Coast Riparian Forests	103
Chamise Chaparral	21
Coast Live Oak Forest / Woodland	134
Cultivated	27,252
Montane Hardwoods	47
Non-native/Ornamental Grass	1
Rural Residential	5,690
Serpentine Grassland	48
Serpentine Hardwoods	0
Urban	13,932
Valley Oak Forest / Woodland	20
Warm Grasslands	1,295
Water	85
<b>Santa Cruz</b>	<b>155,754</b>
Barren/Rock	416
Blue Oak Forest / Woodland	1
California Bay Forest	205
Central Coast Riparian Forests	717
Chamise Chaparral	3,150
Coast Live Oak Forest / Woodland	10,615
Coastal Scrub	5,841
Cool Grasslands	3,236
Cultivated	3,865
Douglas Fir Forest	9,650
Dune	248

Eucalyptus	44
Knobcone Pine Forest	3,608
Mixed Montane Chaparral	4,419
Moderate Grasslands	2,500
Monterey Pine Forest	442
Non-Native Ornamental Conifer-Hardwood Mixture	92
Non-native/Ornamental Grass	28
Permanent Freshwater Marsh	4
Redwood Forest	85,777
Rural Residential	1,128
Sandhills	5,695
Santa Cruz Cypress	209
Semi-Desert Scrub / Desert Scrub	1,504
Serpentine Hardwoods	7
Serpentine Leather-Oak Chaparral	1
Serpentine Scrub	14
Urban	10,819
Warm Grasslands	1,245
Water	273
<b>Santa Cruz Mountains North</b>	<b>280,718</b>
Barren/Rock	1,177
Blue Oak Forest / Woodland	296
California Bay Forest	1,607
Central Coast Riparian Forests	2,473
Chamise Chaparral	15,792
Coast Live Oak Forest / Woodland	15,862
Coastal Salt Marsh / Coastal Brackish Marsh	251
Coastal Scrub	45,348
Cool Grasslands	20,965
Cultivated	6,407
Douglas Fir Forest	18,768
Dune	52
Eucalyptus	2,875
Knobcone Pine Forest	2,394
Mixed Montane Chaparral	414
Moderate Grasslands	9,616
Montane Hardwoods	89
Monterey Cypress Forest	6
Monterey Pine Forest	384
Non-Native Ornamental Conifer-Hardwood Mixture	1,289
Non-Native/Ornamental Conifer	97
Non-native/Ornamental Grass	19

Non-native/Ornamental Hardwood	14
Redwood Forest	61,083
Rural Residential	12,451
Semi-Desert Scrub / Desert Scrub	7,683
Serpentine Conifer	14
Serpentine Grassland	678
Serpentine Hardwoods	148
Serpentine Leather-Oak Chaparral	14
Serpentine Riparian	6
Serpentine Scrub	138
Tanoak Forest	33
Urban	42,175
Valley Oak Forest / Woodland	921
Warm Grasslands	7,126
Water	2,049
Wet Meadows	7
<b>Santa Rosa Plain</b>	<b>74,373</b>
Central Coast Riparian Forests	464
Coast Live Oak Forest / Woodland	147
Cultivated	24,812
Douglas Fir Forest	19
Eucalyptus	54
Mixed Montane Chaparral	1
Montane Hardwoods	846
Non-native/Ornamental Grass	8
Non-Native/Ornamental Shrub	4
Oregon Oak Woodland	51
Permanent Freshwater Marsh	11
Redwood Forest	16
Rural Residential	9,787
Urban	32,380
Valley Oak Forest / Woodland	95
Warm Grasslands	5,267
Water	412
<b>SF Bay and Baylands</b>	<b>246,677</b>
Barren/Rock	6,147
Bishop Pine Forest	51
Blue Oak Forest / Woodland	139
California Bay Forest	77
Central Coast Riparian Forests	28
Chamise Chaparral	24
Coast Live Oak Forest / Woodland	334
Coastal Salt Marsh / Coastal Brackish Marsh	76,529
Coastal Scrub	159

Coastal Terrace Prairie	89
Cool Grasslands	997
Cultivated	24,229
Dune	4
Eucalyptus	196
Hot Grasslands	687
Moderate Grasslands	9,974
Montane Hardwoods	30
Native Grassland	208
Non-Native Ornamental Conifer-Hardwood Mixture	34
Non-Native/Ornamental Conifer	4
Non-native/Ornamental Grass	155
Non-native/Ornamental Hardwood	25
Oregon Oak Woodland	8
Permanent Freshwater Marsh	9,784
Redwood Forest	4
Rural Residential	2,318
Semi-Desert Scrub / Desert Scrub	2
Serpentine Hardwoods	3
Urban	58,994
Valley Oak Forest / Woodland	0
Warm Grasslands	6,606
Water	48,839
<b>Sierra Azul</b>	<b>271,209</b>
Barren/Rock	223
Blue Oak Forest / Woodland	5,414
California Bay Forest	13,039
Central Coast Riparian Forests	1,567
Chamise Chaparral	15,252
Coast Live Oak Forest / Woodland	42,112
Coastal Scrub	8,405
Coastal Terrace Prairie	100
Cool Grasslands	1,115
Cultivated	28,309
Douglas Fir Forest	3,730
Dune	88
Eucalyptus	1,449
Knobcone Pine Forest	579
Mixed Chaparral	37
Mixed Montane Chaparral	6,104
Moderate Grasslands	3,434
Montane Hardwoods	10,050
Monterey Pine Forest	59

Non-Native Ornamental Conifer-Hardwood Mixture	937
Non-Native/Ornamental Conifer	11
Non-native/Ornamental Grass	88
Non-native/Ornamental Hardwood	1
Non-Native/Ornamental Shrub	15
Permanent Freshwater Marsh	202
Redwood Forest	55,780
Rural Residential	6,426
Sandhills	197
Semi-Desert Scrub / Desert Scrub	2,997
Serpentine Barren	1
Serpentine Conifer	34
Serpentine Grassland	2,363
Serpentine Hardwoods	2,362
Serpentine Leather-Oak Chaparral	720
Serpentine Riparian	14
Serpentine Scrub	119
Sycamore Alluvial Woodland	28
Urban	32,036
Valley Oak Forest / Woodland	101
Warm Grasslands	23,781
Water	1,929
<b>Solano Delta</b>	<b>99,066</b>
Barren/Rock	142
Central Coast Riparian Forests	136
Coastal Salt Marsh / Coastal Brackish Marsh	65
Coastal Scrub	1
Cultivated	45,067
Hot Grasslands	36,948
Native Grassland	294
Permanent Freshwater Marsh	1,320
Urban	3,168
Warm Grasslands	8,690
Water	3,234
<b>Solano Plains</b>	<b>176,734</b>
Barren/Rock	10
Blue Oak Forest / Woodland	467
Central Coast Riparian Forests	86
Coast Live Oak Forest / Woodland	93
Coastal Salt Marsh / Coastal Brackish Marsh	161
Coastal Terrace Prairie	3
Cultivated	128,329
Eucalyptus	36



Hot Grasslands	15,286
Montane Hardwoods	17
Native Grassland	3
Non-native/Ornamental Grass	18
Permanent Freshwater Marsh	326
Semi-Desert Scrub / Desert Scrub	38
Urban	27,084
Warm Grasslands	4,670
Water	107
<b>Sonoma Coast Range</b>	<b>418,397</b>
Barren/Rock	1,018
Bishop Pine Forest	3,665
Black Oak Forest / Woodland	469
Blue Oak- Foothill Pine Woodland	365
Blue Oak Forest / Woodland	93
California Bay Forest	4,859
Canyon Live Oak Forest	840
Central Coast Riparian Forests	1,119
Chamise Chaparral	2,131
Coast Live Oak Forest / Woodland	4,940
Coastal Scrub	1,128
Cool Grasslands	5,391
Cultivated	14,969
Douglas Fir Forest	68,484
Eucalyptus	38
Grand Fir	215
Hot Grasslands	7,072
Interior Live Oak Forest / Woodland	1,159
Mcnab Cypress	4,774
Mixed Chaparral	428
Mixed Montane Chaparral	4,204
Moderate Grasslands	14,618
Montane Hardwoods	74,596
Monterey Cypress Forest	13
Monterey Pine Forest	149
Non-native/Ornamental Grass	31
Non-Native/Ornamental Shrub	21
Oregon Oak Woodland	24,251
Ponderosa Pine Forest (Non-Maritime)	844
Pygmy Cypress	106
Redwood Forest	94,051
Rural Residential	13,409
Sargent Cypress Forest / Woodland	962
Serpentine Barren	837

Serpentine Conifer	2,028
Serpentine Grassland	1,080
Serpentine Hardwoods	2,203
Serpentine Leather-Oak Chaparral	1,598
Serpentine Scrub	7
Tanoak Forest	27,122
Urban	6,623
Valley Oak Forest / Woodland	15
Warm Grasslands	22,991
Water	3,454
Wet Meadows	26
<b>Sonoma Mountain</b>	<b>84,557</b>
Barren/Rock	70
Black Oak Forest / Woodland	13
Blue Oak Forest / Woodland	58
California Bay Forest	703
Central Coast Riparian Forests	274
Coast Live Oak Forest / Woodland	3,773
Coastal Salt Marsh / Coastal Brackish Marsh	10
Cultivated	12,897
Douglas Fir Forest	2,238
Eucalyptus	163
Hot Grasslands	337
Mixed Montane Chaparral	310
Moderate Grasslands	1,930
Montane Hardwoods	14,345
Non-native/Ornamental Grass	6
Oregon Oak Woodland	985
Permanent Freshwater Marsh	2
Redwood Forest	712
Rural Residential	7,750
Semi-Desert Scrub / Desert Scrub	21
Serpentine Grassland	265
Serpentine Hardwoods	4
Urban	3,784
Warm Grasslands	33,688
Water	220
Wet Meadows	1
<b>Sonoma Valley</b>	<b>20,840</b>
Barren/Rock	42
Central Coast Riparian Forests	153
Chamise Chaparral	7
Coast Live Oak Forest / Woodland	97
Coastal Scrub	2

Cultivated	9,182
Douglas Fir Forest	57
Eucalyptus	7
Hot Grasslands	9
Knobcone Pine Forest	26
Mixed Chaparral	0
Mixed Montane Chaparral	93
Montane Hardwoods	526
Non-Native Ornamental Conifer-Hardwood Mixture	6
Non-native/Ornamental Grass	5
Oregon Oak Woodland	133
Permanent Freshwater Marsh	8
Ponderosa Pine Forest (Non-Maritime)	20
Rural Residential	3,428
Urban	5,859
Valley Oak Forest / Woodland	12
Warm Grasslands	1,129
Water	30
Wet Meadows	8
<b>South East Bay Hills</b>	<b>47,581</b>
Barren/Rock	4
Blue Oak Forest / Woodland	185
California Bay Forest	305
Central Coast Riparian Forests	306
Chamise Chaparral	51
Coast Live Oak Forest / Woodland	15,664
Coastal Scrub	320
Cultivated	535
Eucalyptus	112
Moderate Grasslands	4,135
Montane Hardwoods	98
Non-Native Ornamental Conifer-Hardwood Mixture	25
Non-native/Ornamental Grass	12
Rural Residential	2,541
Semi-Desert Scrub / Desert Scrub	792
Serpentine Grassland	183
Serpentine Hardwoods	36
Serpentine Scrub	4
Urban	8,857
Valley Oak Forest / Woodland	36
Warm Grasslands	13,369
Water	11
<b>Southern Mayacamas Mountains</b>	<b>171,434</b>

Conservation Lands Network 1.0 Progress Report  
Appendix: Habitat and Biodiversity

Barren/Rock	106
Black Oak Forest / Woodland	214
Blue Oak- Foothill Pine Woodland	366
Blue Oak Forest / Woodland	286
California Bay Forest	630
Canyon Live Oak Forest	20
Central Coast Riparian Forests	94
Chamise Chaparral	838
Coast Live Oak Forest / Woodland	2,999
Coastal Scrub	72
Cultivated	27,011
Douglas Fir Forest	21,165
Eucalyptus	40
Hot Grasslands	4,941
Interior Live Oak Forest / Woodland	9
Knobcone Pine Forest	2,262
Mcnab Cypress	308
Mixed Chaparral	2,000
Mixed Montane Chaparral	12,889
Moderate Grasslands	166
Montane Hardwoods	53,335
Non-Native Ornamental Conifer-Hardwood Mixture	33
Non-Native/Ornamental Conifer	2
Non-native/Ornamental Grass	16
Non-Native/Ornamental Shrub	4
Oregon Oak Woodland	1,255
Permanent Freshwater Marsh	6
Ponderosa Pine Forest (Non-Maritime)	276
Redwood Forest	4,151
Rural Residential	10,080
Sargent Cypress Forest / Woodland	52
Semi-Desert Scrub / Desert Scrub	15
Serpentine Conifer	1,091
Serpentine Grassland	331
Serpentine Hardwoods	1,339
Serpentine Knobcone	118
Serpentine Leather-Oak Chaparral	660
Serpentine Riparian	3
Tanoak Forest	48
Urban	6,997
Valley Oak Forest / Woodland	232
Warm Grasslands	14,714
Water	259

Wet Meadows	4
<b>Tri-Valley</b>	<b>46,062</b>
Central Coast Riparian Forests	84
Cultivated	5,569
Hot Grasslands	683
Montane Hardwoods	1
Non-Native Ornamental Conifer-Hardwood Mixture	0
Non-native/Ornamental Grass	13
Non-native/Ornamental Hardwood	14
Rural Residential	1,146
Urban	32,024
Valley Oak Forest / Woodland	139
Warm Grasslands	5,547
Water	840
<b>Vaca Mountains West</b>	<b>184,198</b>
Barren/Rock	421
Black Oak Forest / Woodland	851
Blue Oak- Foothill Pine Woodland	3,693
Blue Oak Forest / Woodland	10,461
California Bay Forest	4
Canyon Live Oak Forest	773
Central Coast Riparian Forests	156
Chamise Chaparral	4,663
Coast Live Oak Forest / Woodland	3,949
Coastal Scrub	52
Cultivated	19,552
Douglas Fir Forest	3,908
Hot Grasslands	15,411
Interior Live Oak Forest / Woodland	883
Knobcone Pine Forest	1,913
Mcnab Cypress	83
Mixed Chaparral	4,724
Mixed Conifer-Pine	216
Mixed Montane Chaparral	20,768
Moderate Grasslands	2
Montane Hardwoods	54,300
Non-Native Ornamental Conifer-Hardwood Mixture	23
Non-native/Ornamental Grass	41
Oregon Oak Woodland	575
Ponderosa Pine Forest (Non-Maritime)	7,452
Redwood Forest	36
Rural Residential	4,017

Conservation Lands Network 1.0 Progress Report  
Appendix: Habitat and Biodiversity

Sargent Cypress Forest / Woodland	5
Semi-Desert Scrub / Desert Scrub	6
Serpentine Conifer	1,344
Serpentine Grassland	223
Serpentine Hardwoods	2,375
Serpentine Knobcone	20
Serpentine Leather-Oak Chaparral	3,808
Serpentine Riparian	4
Tanoak Forest	12
Urban	6,348
Valley Oak Forest / Woodland	338
Warm Grasslands	9,367
Water	1,423
<b>Grand Total</b>	<b>4,785,287</b>